



Contract No. HK/2009/01

Wan Chai Development Phase II – Central -Wan Chai Bypass at  
Hong Kong Convention and Exhibition Centre

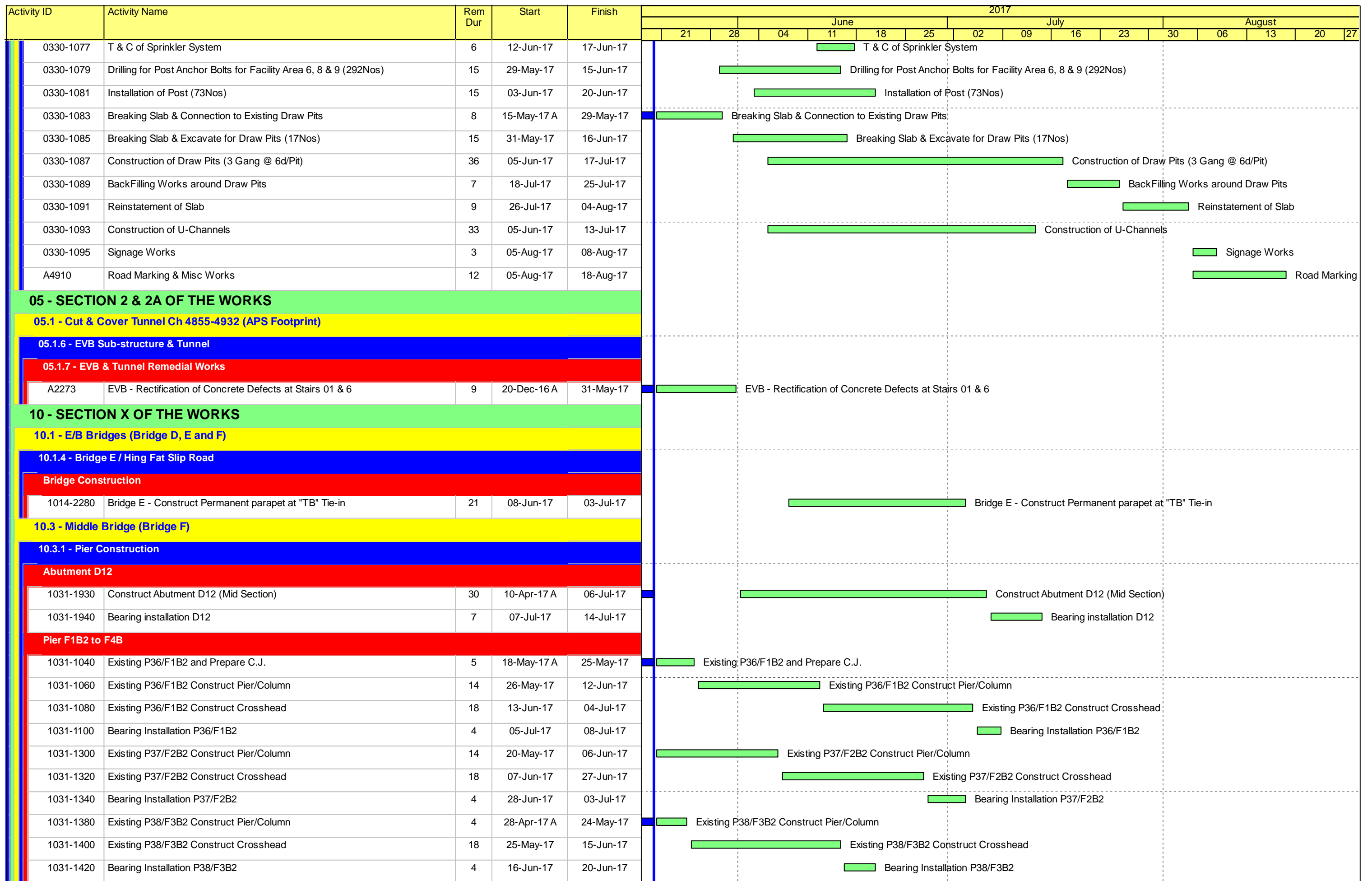
**Construction Activities for Three Months Rolling**

Construction Activities	May 2017	June 2017	July 2017
Reinstatement of Amenity Area			
Road and Drain Works			

Activity ID	Activity Name	Rem Dur	Start	Finish	2017													
					June					July				August				
					21	28	04	11	18	25	02	09	16	23	30	06	13	20
<b>3MRP - May 2017 to Aug 2017</b>																		
<b>02 - PRE-CONSTRUCTION WORKS</b>																		
<b>02.5 - Bridge Segment/Beam Off-site Precasting</b>																		
0250-4018	Bridge F1B2 - Pier F2B Segment - 6 nos. - Mould 2	2	25-Apr-17 A	22-May-17	■ Bridge F1B2 - Pier F2B Segment - 6 nos. - Mould 2													
0250-4019	Bridge F1B2 - Pier F3B Segment - 5 nos. - Mould 2	14	23-May-17	08-Jun-17	■ Bridge F1B2 - Pier F3B Segment - 5 nos. - Mould 2													
0250-4057	Bridge F1B2 - Abut D12 Segment - 6 nos. - Mould 1	11	12-May-17 A	02-Jun-17	■ Bridge F1B2 - Abut D12 Segment - 6 nos. - Mould 1													
0250-4059	Bridge F1B2 - Pier F2B Segment - 5 nos. - Mould 1	13	03-Jun-17	17-Jun-17	■ Bridge F1B2 - Pier F2B Segment - 5 nos. - Mould 1													
0250-4110	Bridge F1B1 - Pier F1A Segment - 13 nos. - Mould 3	14	24-Apr-17 A	06-Jun-17	■ Bridge F1B1 - Pier F1A Segment - 13 nos. - Mould 3													
0250-4115	Bridge F1B1 - Pier F2A Segment - 11nos. - Mould 3	8	09-May-17 A	15-Jun-17	■ Bridge F1B1 - Pier F2A Segment - 11nos. - Mould 3													
0250-4120	Bridge F1B1 - Pier F3A Segment - 6 nos. - Mould 3	17	16-Jun-17	06-Jul-17	■ Bridge F1B1 - Pier F3A Segment - 6 nos. - Mould 3													
A3180	Delivery of Segments - Bridge F1B2	18	01-Jun-17	21-Jun-17	■ Delivery of Segments - Bridge F1B2													
A3190	Delivery of Segments - Bridge F1B1	18	16-Jun-17	07-Jul-17	■ Delivery of Segments - Bridge F1B1													
<b>03 - PRELIMINARY WORKS</b>																		
<b>03.3 - Interface Works</b>																		
<b>FEHD Permanent Depot</b>																		
0330-1023	Drilling & Base Plate Installation (M25 - 104Nos)	12	16-May-17 A	03-Jun-17	■ Drilling & Base Plate Installation (M25 - 104Nos)													
0330-1025	Installation of Pole (25Nos)	13	23-May-17	07-Jun-17	■ Installation of Pole (25Nos)													
0330-1027	Installation of Beams (77Nos)	26	24-May-17	23-Jun-17	■ Installation of Beams (77Nos)													
0330-1029	Installation of Bondek (Soffit Formworks)	12	16-Jun-17	29-Jun-17	■ Installation of Bondek (Soffit Formworks)													
0330-1031	Rebar Fixing	7	23-Jun-17	30-Jun-17	■ Rebar Fixing													
0330-1033	Edges Formworks	2	29-Jun-17	30-Jun-17	■ Edges Formworks													
0330-1035	Concreting of Deck	3	03-Jul-17	05-Jul-17	■ Concreting of Deck													
0330-1043	Construction of Brace Footing	5	20-May-17	25-May-17	■ Construction of Brace Footing													
0330-1047	Erection of Bracing Beam (3Nos)	3	26-May-17	29-May-17	■ Erection of Bracing Beam (3Nos)													
0330-1049	Touch-up Painting	12	02-Jun-17	15-Jun-17	■ Touch-up Painting													
0330-1051	Waterproofing & Slab Reinstatement	7	31-May-17	07-Jun-17	■ Waterproofing & Slab Reinstatement													
0330-1055	Construction of Lamp Pole Footing (12Nos)	21	20-May-17	14-Jun-17	■ Construction of Lamp Pole Footing (12Nos)													
0330-1057	Drilling for Lamp Pole at Existing Slab (8Nos Poles; M16-64Nos)	8	26-May-17	05-Jun-17	■ Drilling for Lamp Pole at Existing Slab (8Nos Poles; M16-64Nos)													
0330-1059	Installation of Lamp Pole (total 20Nos)	14	01-Jun-17	16-Jun-17	■ Installation of Lamp Pole (total 20Nos)													
0330-1061	Breaking Existing Slab for Cross Road Ducting (Approx 300m)	18	02-Jun-17	22-Jun-17	■ Breaking Existing Slab for Cross Road Ducting (Approx 300m)													
0330-1063	Laying Duct	5	23-Jun-17	28-Jun-17	■ Laying Duct													
0330-1065	Cabling Works	9	29-Jun-17	10-Jul-17	■ Cabling Works													
0330-1067	Slab Reinstatement	8	11-Jul-17	19-Jul-17	■ Slab Reinstatement													
0330-1069	Drilling for Post Anchor Bolts for Facility Area 5 & 10 (172Nos)	6	15-May-17 A	26-May-17	■ Drilling for Post Anchor Bolts for Facility Area 5 & 10 (172Nos)													
0330-1071	Installation of Post (43Nos)	9	20-May-17	31-May-17	■ Installation of Post (43Nos)													
0330-1073	Construction of Steel Roof	9	25-May-17	05-Jun-17	■ Construction of Steel Roof													
0330-1075	Sprinkler System Installation	10	31-May-17	10-Jun-17	■ Sprinkler System Installation													

■ Remaining Level of Effort    ■ Remaining Work  
■ Actual Level of Effort    ■ Critical Remaining Work  
■ Actual Work    ◆ ◆ Milestone

**Contract HY/2009/19**  
**Three Months Rolling Programme (20 May 2017 to 19 August 2017)**



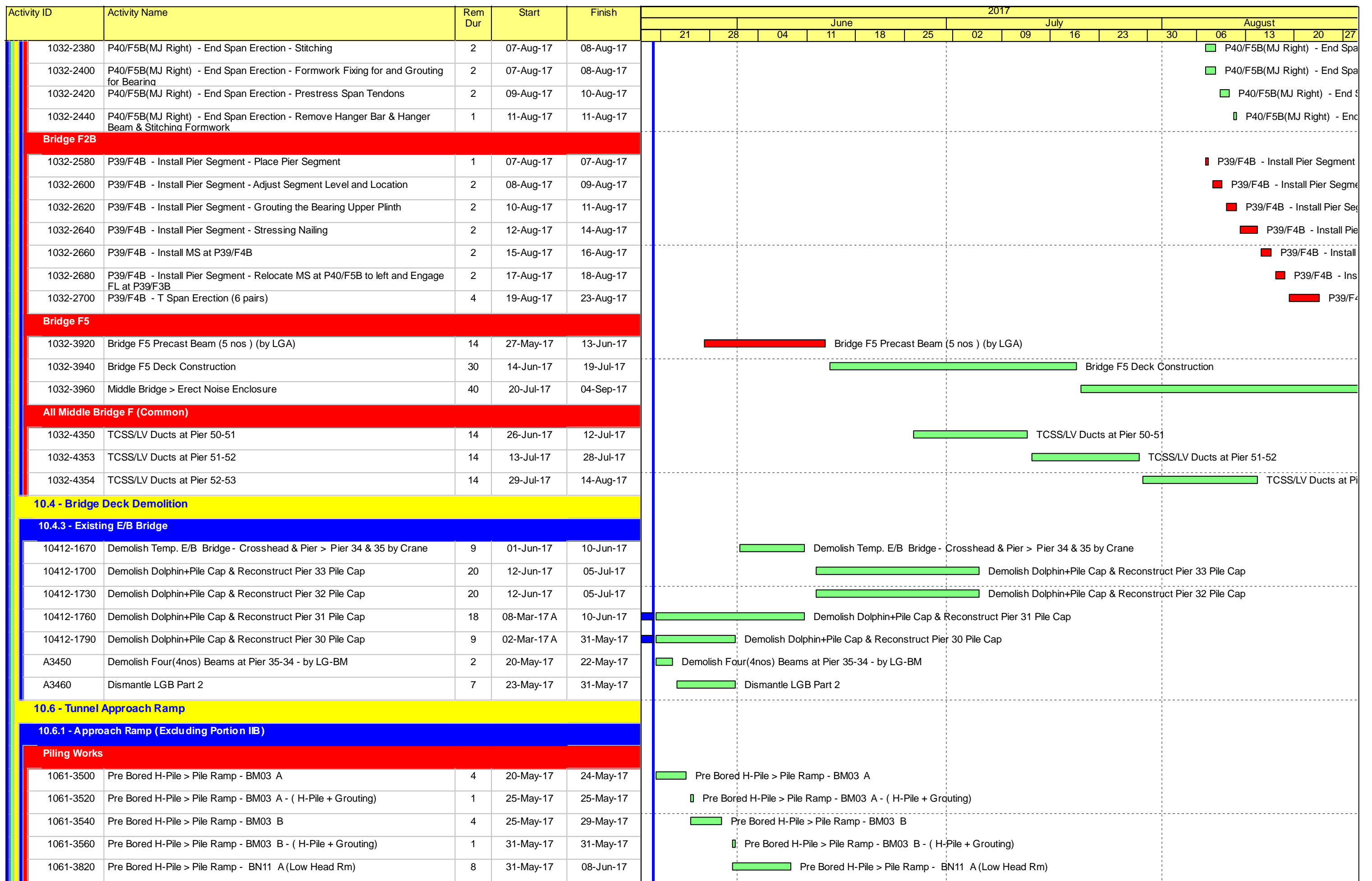
█ Remaining Level of Effort    █ Remaining Work  
█ Actual Level of Effort    █ Critical Remaining Work  
█ Actual Work    ◆ ◆ Milestone

**Contract HY/2009/19**  
**Three Months Rolling Programme (20 May 2017 to 19 August 2017)**

Activity ID	Activity Name	Rem Dur	Start	Finish	2017																
					June					July				August							
					21	28	04	11	18	25	02	09	16	23	30	06	13	20	27		
1031-1460	Existing P39/F4B Construct Pier/Column	2	14-Apr-17 A	22-May-17	Existing P39/F4B Construct Pier/Column																
1031-1480	Existing P39/F4B Construct Crosshead	18	23-May-17	13-Jun-17	Existing P39/F4B Construct Crosshead																
1031-1500	Bearing Installation P39/F4B	4	14-Jun-17	17-Jun-17	Bearing Installation P39/F4B																
<b>Pier F5B to F8B</b>																					
1031-1560	Existing P40/F5B Construct Crosshead	18	27-Apr-17 A	10-Jun-17	Existing P40/F5B Construct Crosshead																
1031-1580	Bearing Installation P40/F5B	4	12-Jun-17	15-Jun-17	Bearing Installation P40/F5B																
1031-1660	Bearing Installation P41/F6B	4	20-May-17	24-May-17	Bearing Installation P41/F6B																
1031-1740	Bearing Installation P42/F7B	2	10-May-17 A	22-May-17	Bearing Installation P42/F7B																
<b>10.3.2 - Bridge Construction</b>																					
<b>Bridge F3B</b>																					
1032-1840	LG-A Launching - Engage FL at F7B/Pier42	2	25-May-17	26-May-17	LG-A Launching - Engage FL at F7B/Pier42																
1032-1860	P42/F7B - Install Pier Segment - Place Pier Segment	1	14-Jun-17	14-Jun-17	P42/F7B - Install Pier Segment - Place Pier Segment																
1032-1880	P42/F7B - Install Pier Segment - Adjust Segment Level and Location	2	15-Jun-17	16-Jun-17	P42/F7B - Install Pier Segment - Adjust Segment Level and Location																
1032-1900	P42/F7B - Install Pier Segment - Grouting the Bearing Upper Plinth	2	17-Jun-17	19-Jun-17	P42/F7B - Install Pier Segment - Grouting the Bearing Upper Plinth																
1032-1920	P42/F7B - Install Pier Segment - Stressing Nailing	2	20-Jun-17	21-Jun-17	P42/F7B - Install Pier Segment - Stressing Nailing																
1032-1940	LG-A Launching - Install MS at P42/F7B	1	22-Jun-17	22-Jun-17	LG-A Launching - Install MS at P42/F7B																
1032-1960	LG-A Launching - Deactivate the MS at F9B/Pier44 and Engage FL at P41/F6B	2	23-Jun-17	24-Jun-17	LG-A Launching - Deactivate the MS at F9B/Pier44 and Engage FL at P41/F6B																
1032-1980	P41/F6B - Install Pier Segment - Place Pier Segment	1	26-Jun-17	26-Jun-17	P41/F6B - Install Pier Segment - Place Pier Segment																
1032-2000	P41/F6B - Install Pier Segment - Adjust Segment Level and Location	2	27-Jun-17	28-Jun-17	P41/F6B - Install Pier Segment - Adjust Segment Level and Location																
1032-2020	P41/F6B - Install Pier Segment - Grouting the Bearing Upper Plinth	2	29-Jun-17	30-Jun-17	P41/F6B - Install Pier Segment - Grouting the Bearing Upper Plinth																
1032-2040	P41/F6B - Install Pier Segment - Stressing Nailing	2	03-Jul-17	04-Jul-17	P41/F6B - Install Pier Segment - Stressing Nailing																
1032-2060	P41/F6B - Install Pier Segment - Install MS at F6B/Pier41	1	05-Jul-17	05-Jul-17	P41/F6B - Install Pier Segment - Install MS at F6B/Pier41																
1032-2080	P42/F7B - T Span Erection (5 pairs)	4	06-Jul-17	10-Jul-17	P42/F7B - T Span Erection (5 pairs)																
1032-2100	P43/F8B(MJ Left) - End Span Erection - Hanging Segments	3	11-Jul-17	13-Jul-17	P43/F8B(MJ Left) - End Span Erection - Hanging Segments																
1032-2120	P43/F8B(MJ Left) - End Span Erection - Erect Segments	1	14-Jul-17	14-Jul-17	P43/F8B(MJ Left) - End Span Erection - Erect Segments																
1032-2140	P43/F8B(MJ Left) - End Span Erection - Stitching	2	15-Jul-17	17-Jul-17	P43/F8B(MJ Left) - End Span Erection - Stitching																
1032-2160	P43/F8B(MJ Left) - End Span Erection - Formwork Fixing for and Grouting for Bearing	2	15-Jul-17	17-Jul-17	P43/F8B(MJ Left) - End Span Erection - Formwork Fixing for and Grouting for Bearing																
1032-2180	P43/F8B(MJ Left) - End Span Erection - Prestress Span Tendons	2	18-Jul-17	19-Jul-17	P43/F8B(MJ Left) - End Span Erection - Prestress Span Tendons																
1032-2200	P43/F8B(MJ Left) - End Span Erection - Remove Hanger Bar & Hanger Beam & Stitching Formwork	1	20-Jul-17	20-Jul-17	P43/F8B(MJ Left) - End Span Erection - Remove Hanger Bar & Hanger Beam & Stitching Formwork																
1032-2220	LG-A Launching - Deactivate the MS at F8B/Pier43 and Engage FL at P40/F5B	2	21-Jul-17	22-Jul-17	LG-A Launching - Deactivate the MS at F8B/Pier43 and Engage FL at P40/F5B																
1032-2240	P41/F6B - T Span Erection (6 pairs)	4	24-Jul-17	27-Jul-17	P41/F6B - T Span Erection (6 pairs)																
1032-2260	P40/F5B - Install Pier Segment - Place Pier Segment (2nos.)	2	24-Jul-17	25-Jul-17	P40/F5B - Install Pier Segment - Place Pier Segment																
1032-2280	P40/F5B - Install Pier Segment - Adjust Segment Level and Location	3	26-Jul-17	28-Jul-17	P40/F5B - Install Pier Segment - Adjust Segment																
1032-2300	P40/F5B - Install Pier Segment - Install the Tie & Packing System	2	29-Jul-17	31-Jul-17	P40/F5B - Install Pier Segment - Install the																
1032-2320	P40/F5B - Install Pier Segment - Install MS at P40/F5B (Right) and Engage FL at P39/F4B	2	01-Aug-17	02-Aug-17	P40/F5B - Install Pier Segment - Install																
1032-2340	P40/F5B(MJ Right) - End Span Erection - Hanging Segments	2	03-Aug-17	04-Aug-17	P40/F5B(MJ Right) - End Span Erection																
1032-2360	P40/F5B(MJ Right) - End Span Erection - Erect Segments	1	05-Aug-17	05-Aug-17	P40/F5B(MJ Right) - End Span Erection																

Remaining Level of Effort	Remaining Work
Actual Level of Effort	Critical Remaining Work
Actual Work	Milestone

**Contract HY/2009/19**  
**Three Months Rolling Programme (20 May 2017 to 19 August 2017)**



- Remaining Level of Effort
- Actual Level of Effort
- Critical Remaining Work
- Actual Work
- Remaining Work
- Critical Remaining Work
- ◆ Milestone

**Contract HY/2009/19**  
**Three Months Rolling Programme (20 May 2017 to 19 August 2017)**

Activity ID	Activity Name	Rem Dur	Start	Finish	2017																
					June					July					August						
					21	28	04	11	18	25	02	09	16	23	30	06	13	20	27		
1061-3840	Pre Bored H-Pile > Pile Ramp - BN11 A - ( H-Pile + Grouting)	1	09-Jun-17	09-Jun-17	■ Pre Bored H-Pile > Pile Ramp - BN11 A - ( H-Pile + Grouting)																
1061-3860	Pre Bored H-Pile > Pile Ramp - BN11 B (LHR)	8	31-May-17	08-Jun-17	■ Pre Bored H-Pile > Pile Ramp - BN11 B (LHR)																
1061-3880	Pre Bored H-Pile > Pile Ramp - BN11 B - ( H-Pile + Grouting)	1	09-Jun-17	09-Jun-17	■ Pre Bored H-Pile > Pile Ramp - BN11 B - ( H-Pile + Grouting)																
1061-3900	Pre Bored H-Pile > Pile Ramp - BN12 A (LHR)	8	09-Jun-17	17-Jun-17	■ Pre Bored H-Pile > Pile Ramp - BN12 A (LHR)																
1061-3920	Pre Bored H-Pile > Pile Ramp - BN12 A - ( H-Pile + Grouting)	1	19-Jun-17	19-Jun-17	■ Pre Bored H-Pile > Pile Ramp - BN12 A - ( H-Pile + Grouting)																
1061-3940	Pre Bored H-Pile > Pile Ramp - BN12 B (LHR)	8	09-Jun-17	17-Jun-17	■ Pre Bored H-Pile > Pile Ramp - BN12 B (LHR)																
1061-3960	Pre Bored H-Pile > Pile Ramp - BN12 B - ( H-Pile + Grouting)	1	19-Jun-17	19-Jun-17	■ Pre Bored H-Pile > Pile Ramp - BN12 B - ( H-Pile + Grouting)																
1061-3980	Pre Bored H-Pile > Pile Ramp - BN13 A (LHR)	8	19-Jun-17	27-Jun-17	■ Pre Bored H-Pile > Pile Ramp - BN13 A (LHR)																
1061-4000	Pre Bored H-Pile > Pile Ramp - BN13 A - ( H-Pile + Grouting)	1	28-Jun-17	28-Jun-17	■ Pre Bored H-Pile > Pile Ramp - BN13 A - ( H-Pile + Grouting)																
1061-4020	Pre Bored H-Pile > Pile Ramp - BN13 B (LHR)	8	19-Jun-17	27-Jun-17	■ Pre Bored H-Pile > Pile Ramp - BN13 B (LHR)																
1061-4040	Pre Bored H-Pile > Pile Ramp - BN13 B - ( H-Pile + Grouting)	1	28-Jun-17	28-Jun-17	■ Pre Bored H-Pile > Pile Ramp - BN13 B - ( H-Pile + Grouting)																
1061-4060	Pre Bored H-Pile > Pile Ramp - BN01 A (LHR)	8	28-Jun-17	07-Jul-17	■ Pre Bored H-Pile > Pile Ramp - BN01 A (LHR)																
1061-4080	Pre Bored H-Pile > Pile Ramp - BN01 A - ( H-Pile + Grouting)	1	08-Jul-17	08-Jul-17	■ Pre Bored H-Pile > Pile Ramp - BN01 A - ( H-Pile + Grouting)																
1061-4100	Pre Bored H-Pile > Pile Ramp - BN01 B (LHR)	8	28-Jun-17	07-Jul-17	■ Pre Bored H-Pile > Pile Ramp - BN01 B (LHR)																
1061-4120	Pre Bored H-Pile > Pile Ramp - BN01 B - ( H-Pile + Grouting)	1	08-Jul-17	08-Jul-17	■ Pre Bored H-Pile > Pile Ramp - BN01 B - ( H-Pile + Grouting)																
1061-4140	Pre Bored H-Pile > Pile Ramp - BN05 A (LHR)	8	08-Jul-17	17-Jul-17	■ Pre Bored H-Pile > Pile Ramp - BN05 A (LHR)																
1061-4160	Pre Bored H-Pile > Pile Ramp - BN05 A - ( H-Pile + Grouting)	1	18-Jul-17	18-Jul-17	■ Pre Bored H-Pile > Pile Ramp - BN05 A - ( H-Pile + Grouting)																
1061-4180	Pre Bored H-Pile > Pile Ramp - BN05 B (LHR)	8	08-Jul-17	17-Jul-17	■ Pre Bored H-Pile > Pile Ramp - BN05 B (LHR)																
1061-4200	Pre Bored H-Pile > Pile Ramp - BN05 B - ( H-Pile + Grouting)	1	18-Jul-17	18-Jul-17	■ Pre Bored H-Pile > Pile Ramp - BN05 B - ( H-Pile + Grouting)																
1061-4220	Pre Bored H-Pile > Pile Ramp - BN06 A (LHR)	8	18-Jul-17	26-Jul-17	■ Pre Bored H-Pile > Pile Ramp - BN06 A (LHR)																
1061-4240	Pre Bored H-Pile > Pile Ramp - BN06 A - ( H-Pile + Grouting)	1	27-Jul-17	27-Jul-17	■ Pre Bored H-Pile > Pile Ramp - BN06 A - ( H-Pile + Grouting)																
1061-4260	Pre Bored H-Pile > Pile Ramp - BN06 B (LHR)	8	18-Jul-17	26-Jul-17	■ Pre Bored H-Pile > Pile Ramp - BN06 B (LHR)																
1061-4280	Pre Bored H-Pile > Pile Ramp - BN06 B - ( H-Pile + Grouting)	1	27-Jul-17	27-Jul-17	■ Pre Bored H-Pile > Pile Ramp - BN06 B - ( H-Pile + Grouting)																
1061-4300	Remaining Bored Piles & Pre-Bored H-Pile Testing	30	22-Jun-17	27-Jul-17	■ Remaining Bored Piles & Pre-Bored H-Pile Testing																
<b>Excavation &amp; ELS Works</b>																					
1061-4910	Advance Sheet Piling Works + Pre-drilling in Phase 2 - Cul de sac Area (30m)	14	04-Apr-17 A	06-Jun-17	■ Advance Sheet Piling Works + Pre-drilling in Phase 2 - Cul de sac Area (30m)																
1061-5100	Pumping Test	9	16-May-17 A	31-May-17	■ Pumping Test																
1061-5120	Complete Pump Test	0		31-May-17	◆ Complete Pump Test																
1061-5180	Ch 5234 - 5285 > Install 1st Layer of Strut & Waling	7	24-Apr-17 A	27-May-17	■ Ch 5234 - 5285 > Install 1st Layer of Strut & Waling																
1061-5200	Ch 5234 - 5285 > Excav from 2.5mPD to 1m Below 2nd Layer of Struts	16	01-Jun-17	19-Jun-17	■ Ch 5234 - 5285 > Excav from 2.5mPD to 1m Below 2nd Layer of Struts																
1061-5220	Ch 5234 - 5285 > Install 2nd Layer of Strut & Waling	9	20-Jun-17	29-Jun-17	■ Ch 5234 - 5285 > Install 2nd Layer of Strut & Waling																
1061-5240	Ch 5234 - 5285 > Excav to FEL	13	30-Jun-17	15-Jul-17	■ Ch 5234 - 5285 > Excav to FEL																
<b>Structure Works</b>																					
1061-5260	Bay 1 - Ch 5322 - 5331 > Base Slab - Blinding Layer	1	20-Jun-17	20-Jun-17	■ Bay 1 - Ch 5322 - 5331 > Base Slab - Blinding Layer																
1061-5280	Bay 1 - Ch 5322 - 5331 > Base Slab - Water Proofing Membrane	2	21-Jun-17	22-Jun-17	■ Bay 1 - Ch 5322 - 5331 > Base Slab - Water Proofing Membrane																
1061-5300	Bay 1 - Ch 5322 - 5331 > Base Slab - Rebar Fixing	5	23-Jun-17	28-Jun-17	■ Bay 1 - Ch 5322 - 5331 > Base Slab - Rebar Fixing																
1061-5320	Bay 1 - Ch 5322 - 5331 > Base Slab - Erect Formworks	4	29-Jun-17	04-Jul-17	■ Bay 1 - Ch 5322 - 5331 > Base Slab - Erect Formworks																

 Remaining Level of Effort   
  Remaining Work  
 Actual Level of Effort   
  Critical Remaining Work  
 Actual Work   
  Milestone

**Contract HY/2009/19**  
**Three Months Rolling Programme (20 May 2017 to 19 August 2017)**

Activity ID	Activity Name	Rem Dur	Start	Finish	2017																
					June					July					August						
					21	28	04	11	18	25	02	09	16	23	30	06	13	20	27		
1061-5340	Bay 1 - Ch 5322 - 5331 > Base Slab - Concreting	1	05-Jul-17	05-Jul-17															■ Bay 1 - Ch 5322 - 5331 > Base Slab - Concreting		
1061-5360	Bay 2 - Ch 5313 - 5322 > Base Slab - Blinding Layer	1	06-Jul-17	06-Jul-17															■ Bay 2 - Ch 5313 - 5322 > Base Slab - Blinding Layer		
1061-5380	Bay 2 - Ch 5313 - 5322 > Base Slab - Water Proofing Membrane	2	07-Jul-17	08-Jul-17															■ Bay 2 - Ch 5313 - 5322 > Base Slab - Water Proofing Membrane		
1061-5400	Bay 2 - Ch 5313 - 5322 > Base Slab - Rebar Fixing	5	10-Jul-17	14-Jul-17															■ Bay 2 - Ch 5313 - 5322 > Base Slab - Rebar Fixing		
1061-5420	Bay 2 - Ch 5313 - 5322 > Base Slab - Erect Formworks	4	15-Jul-17	19-Jul-17															■ Bay 2 - Ch 5313 - 5322 > Base Slab - Erect Formworks		
1061-5440	Bay 2 - Ch 5313 - 5322 > Base Slab - Concreting	1	20-Jul-17	20-Jul-17															■ Bay 2 - Ch 5313 - 5322 > Base Slab - Concreting		
1061-5460	Bay 3 - Ch 5303 - 5313 > Base Slab - Blinding Layer	1	21-Jul-17	21-Jul-17															■ Bay 3 - Ch 5303 - 5313 > Base Slab - Blinding Layer		
1061-5480	Bay 3 - Ch 5303 - 5313 > Base Slab - Water Proofing Membrane	2	22-Jul-17	24-Jul-17															■ Bay 3 - Ch 5303 - 5313 > Base Slab - Water Proofing Membrane		
1061-5500	Bay 3 - Ch 5303 - 5313 > Base Slab - Rebar Fixing	5	25-Jul-17	29-Jul-17															■ Bay 3 - Ch 5303 - 5313 > Base Slab - Rebar Fixing		
1061-5520	Bay 3 - Ch 5303 - 5313 > Base Slab - Erect Formworks	4	31-Jul-17	03-Aug-17															■ Bay 3 - Ch 5303 - 5313 > Base Slab - Erect Formworks		
1061-5540	Bay 3 - Ch 5303 - 5313 > Base Slab - Concreting	1	04-Aug-17	04-Aug-17															■ Bay 3 - Ch 5303 - 5313 > Base Slab - Concreting		
1061-5560	Bay 6 - Ch 5262 - 5277 > Base Slab - Blinding Layer	1	17-Jul-17	17-Jul-17															■ Bay 6 - Ch 5262 - 5277 > Base Slab - Blinding Layer		
1061-5580	Bay 6 - Ch 5262 - 5277 > Base Slab - Water Proofing Membrane	2	18-Jul-17	19-Jul-17															■ Bay 6 - Ch 5262 - 5277 > Base Slab - Water Proofing Membrane		
1061-5600	Bay 6 - Ch 5262 - 5277 > Base Slab - Rebar Fixing	6	20-Jul-17	26-Jul-17															■ Bay 6 - Ch 5262 - 5277 > Base Slab - Rebar Fixing		
1061-5620	Bay 6 - Ch 5262 - 5277 > Base Slab - Erect Formworks	4	27-Jul-17	31-Jul-17															■ Bay 6 - Ch 5262 - 5277 > Base Slab - Erect Formworks		
1061-5640	Bay 6 - Ch 5262 - 5277 > Base Slab - Concreting	1	01-Aug-17	01-Aug-17															■ Bay 6 - Ch 5262 - 5277 > Base Slab - Concreting		
1061-5660	Bay 5 - Ch 5277 - 5292 > Base Slab - Blinding Layer (WF1)	1	02-Aug-17	02-Aug-17															■ Bay 5 - Ch 5277 - 5292 > Base Slab - Blinding Layer (WF1)		
1061-5680	Bay 5 - Ch 5277 - 5292 > Base Slab - Base Slab - Water Proofing Membrane (WF1)	3	03-Aug-17	05-Aug-17															■ Bay 5 - Ch 5277 - 5292 > Base Slab - Water Proofing Membrane (WF1)		
1061-5700	Bay 5 - Ch 5277 - 5292 > Base Slab - Rebar Fixing (WF1)	6	07-Aug-17	12-Aug-17															■ Bay 5 - Ch 5277 - 5292 > Base Slab - Rebar Fixing (WF1)		
1061-5720	Bay 5 - Ch 5277 - 5292 > Base Slab - Erect Formworks (WF1)	3	14-Aug-17	16-Aug-17															■ Bay 5 - Ch 5277 - 5292 > Base Slab - Erect Formworks (WF1)		
1061-5740	Bay 5 - Ch 5277 - 5292 > Base Slab - Concreting (WF1)	1	17-Aug-17	17-Aug-17															■ Bay 5 - Ch 5277 - 5292 > Base Slab - Concreting (WF1)		
1061-5760	Bay 4 - Ch 5292 - 5303 > Base Slab - Blinding Layer (WF1)	1	18-Aug-17	18-Aug-17															■ Bay 4 - Ch 5292 - 5303 > Base Slab - Blinding Layer (WF1)		
1061-5780	Bay 4 - Ch 5292 - 5303 > Base Slab - Base Slab - Water Proofing Membrane (WF1)	3	19-Aug-17	22-Aug-17															■ Bay 4 - Ch 5292 - 5303 > Base Slab - Water Proofing Membrane (WF1)		
1061-5860	Bay 7 - Ch 5247 - 5262 > Base Slab - Blinding Layer (WF2)	1	02-Aug-17	02-Aug-17															■ Bay 7 - Ch 5247 - 5262 > Base Slab - Blinding Layer (WF2)		
1061-5880	Bay 7 - Ch 5247 - 5262 > Base Slab - Base Slab - Water Proofing Membrane (WF2)	3	03-Aug-17	05-Aug-17															■ Bay 7 - Ch 5247 - 5262 > Base Slab - Water Proofing Membrane (WF2)		
1061-5900	Bay 7 - Ch 5247 - 5262 > Base Slab - Rebar Fixing (WF2)	6	07-Aug-17	12-Aug-17															■ Bay 7 - Ch 5247 - 5262 > Base Slab - Rebar Fixing (WF2)		
1061-5920	Bay 7 - Ch 5247 - 5262 > Base Slab - Erect Formworks (WF2)	3	14-Aug-17	16-Aug-17															■ Bay 7 - Ch 5247 - 5262 > Base Slab - Erect Formworks (WF2)		
1061-5940	Bay 7 - Ch 5247 - 5262 > Base Slab - Concreting (WF2)	1	17-Aug-17	17-Aug-17															■ Bay 7 - Ch 5247 - 5262 > Base Slab - Concreting (WF2)		
1061-5960	Bay 8 - Ch 5232 - 5247 > Base Slab - Blinding Layer (WF2)	1	18-Aug-17	18-Aug-17															■ Bay 8 - Ch 5232 - 5247 > Base Slab - Blinding Layer (WF2)		
1061-5980	Bay 8 - Ch 5232 - 5247 > Base Slab - Base Slab - Water Proofing Membrane (WF2)	3	19-Aug-17	22-Aug-17															■ Bay 8 - Ch 5232 - 5247 > Base Slab - Water Proofing Membrane (WF2)		
<b>Retaining Walls &amp; Trough Structure B,C &amp; D</b>																					
1061-6860	Construct Retaining Wall E Ple Cap (7 nos)	24	06-Mar-17 A	17-Jun-17	■	■	■	■	■	■	■	■	■	■	■	■	■	■	Construct Retaining Wall E Ple Cap (7 nos)		
1061-6880	Construct Retaining Wall E1 (Ch 5332 - 5371)	18	19-Jun-17	10-Jul-17															Construct Retaining Wall E1 (Ch 5332 - 5371)		
1061-6900	Construct Retaining Wall E3 (Ch 5371 - 5398)	18	11-Jul-17	31-Jul-17															Construct Retaining Wall E3 (Ch 5371 - 5398)		
1061-6920	Construct Retaining Wall E3 (Ch 5398 - 5419)	18	19-Jun-17	10-Jul-17															Construct Retaining Wall E3 (Ch 5398 - 5419)		

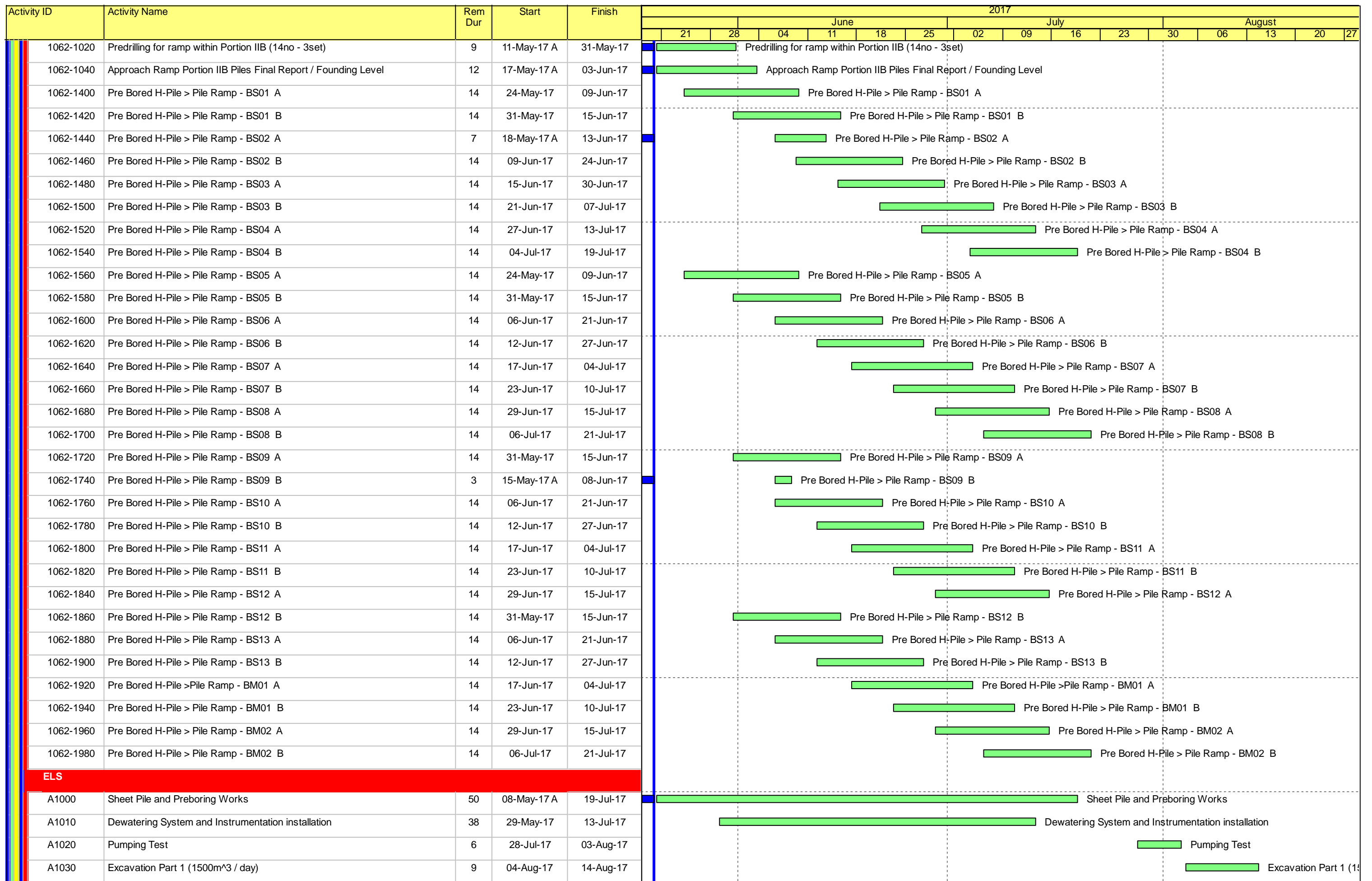
**10.6.2 - Approach Ramp (Within Portion IIB)**

**Pre-Bored H-Piles**

■ Remaining Level of Effort     ■ Remaining Work  
■ Actual Level of Effort     ■ Critical Remaining Work  
■ Actual Work     ◆ ◆ Milestone

### Contract HY/2009/19

### Three Months Rolling Programme (20 May 2017 to 19 August 2017)



█ Remaining Level of Effort    █ Remaining Work  
█ Actual Level of Effort    █ Critical Remaining Work  
█ Actual Work    ◆ ◆ Milestone

**Contract HY/2009/19**  
**Three Months Rolling Programme (20 May 2017 to 19 August 2017)**



China State Construction Engineering (Hong Kong) Ltd.

Contract No. HY/2009/15 - Central Wan Chai By Pass - Tunnel (Causeway Bay Typhoon Shelter Section)

Activity Name	Start	Finish	2017		
			Apr	May	Jun
Hung Hing Road Resurfacing	1/6/2017	30/6/2017			
Defect works inside tunnel	1/4/2017	30/9/2017			

Activity ID	Activity Name	Ori Dur	Rem Dur	Scheduled/ Actual Start	Scheduled/ Actual Finish	Total Float	Calendar	2017																
								April			May			June			July							
								26	02	09	16	23	30	07	14	21	28	04	11	18	25	02	09	16
<b>Three Months Rolling Programme 2017-04-20 (dd 20-Apr-17)</b>																								
<b>Programme Milestones (Revised up to EOTO No.21)</b>																								
<b>Contractual Completion Dates</b>																								
KDC0170	Section 9B Works (2134 days) - CWB Structure (CH3400 Eastward) (2-Dec-15 Noon)	0	0		20-Apr-17*	-504	Calendar Day	◆ Section 9B Works (2134 days) - CWB Structure (CH3400 Eastward) (2-Dec-15 Noon)																
KDC0180	Section 10 Works (2469 days) - CWB Structure (CH3400 Westward) (31-Oct-16)	0	0		20-Apr-17*	-170	Calendar Day	◆ Section 10 Works (2469 days) - CWB Structure (CH3400 Westward) (31-Oct-16)																
KDC0190	Section 11 Works (2673 days) - Remainder of Works/ Works Completion Date (23-May-17)	0	0		23-May-17*	0	Calendar Day	◆ Section 11 Works (2673 days) - Remainder of Works/ Works Completion Date (23-May-17)																
<b>Soft Landscaping &amp; Establishment Key Dates</b>																								
KDC0200	Section 11A Works (2440 days) - Remaining Landscape Softworks (03-Oct-16 Noon)	0	0		20-Apr-17*	-198	Calendar Day	◆ Section 11A Works (2440 days) - Remaining Landscape Softworks (03-Oct-16 Noon)																
KDC0220	Section 12 Works (2672 days) - Protection and Preservation of Existing Trees (22-May-17 Noon)	0	0		22-May-17*	0	Calendar Day	◆ Section 12 Works (2672 days) - Protection and Preservation of Existing Trees (22-May-17 Noon)																
<b>Section 8A of the Works - Re-provisioning of Wan Chai Ferry Pier in Area 8</b>																								
<b>Outstanding Works</b>																								
S8A-OUT-1040	Relocation of fire hydrant near Ferry Pier	10	10	14-Jul-17	25-Jul-17	-58	HK Working Day	[Red Bar] Relocation of fire hydrant near Ferry Pier																
S8A-OUT-1060	Reinstatement works of the flooring inside the rooms under staircase ST-01 of the Ferry Pier	12	12	03-Jul-17	14-Jul-17	-58	HK Working Day	[Red Bar] Reinstatement works of the flooring inside the rooms under staircase ST-01 of the Ferry Pier																
S8A-OUT-1070	Reinstatement works of the flooring under the temporary covered walkway	6	6	14-Jul-17	20-Jul-17	-54	HK Working Day	[Red Bar] Reinstatement works of the flooring under the temporary covered walkway																
<b>Section 8B of the Works - Temporary Covered Walkway &amp; Works in Area 8</b>																								
<b>Temporary Covered Walkway</b>																								
S8B-TCW-02300	Temp Covered Walkway - Construct the remaining Type 4 Covered Walkway at west wing	36	36	17-Jun-17	27-Jul-17	-60	HK Working Day	[Red Bar] Temp Covered Walkway - Construct the remaining Type 4 Covered Walkway at west wing																
<b>Section 9B of the Works - CWB Tunnel Structure (CH3400 - CH3796)</b>																								
<b>Tunnel Portion 1 (CH3500-CH3630)</b>																								
<b>CWB Structural Works</b>																								
<b>Outstanding Works</b>																								
S9B-T1-OUT-1010	TB1 - Remedial works of the cross road ducts	25	0	12-Oct-16 A	15-Apr-17 A		Calendar Day	[Green Bar] TB1 - Remedial works of the cross road ducts																
S9B-T1-OUT-1030	TB1 - Remedial works against water leakage identified inside the OHVD cells	30	0	14-Mar-17 A	12-Apr-17 A		Calendar Day	[Green Bar] TB1 - Remedial works against water leakage identified inside the OHVD cells																
<b>Tunnel Portion 2 (CH3425-CH3500)</b>																								
<b>CWB Structural Works</b>																								
<b>Outstanding Works</b>																								
S9B-T2-OUT-1010	TB2 - Remedial works of the cross road ducts	25	7	12-Oct-16 A	26-Apr-17	-511	Calendar Day	[Red Bar] TB2 - Remedial works of the cross road ducts, TB2 - Remedial works of the cross road ducts																
S9B-T2-OUT-1020	TB2 - Remedial works against water leakage identified inside the OHVD cells	25	5	12-Oct-16 A	24-Apr-17	29	Calendar Day	[Green Bar] TB2 - Remedial works against water leakage identified inside the OHVD cells																
<b>Tunnel Portion 3 &amp; Tunnel Portion 4 (CH3630-CH3790)</b>																								
<b>CWB Structural Works</b>																								
S9B-T34-7400	ELS (S1) Removal - Bay 1 to Bay 8	28	28	08-Jun-17	06-Jul-17	-503	Calendar Day	[Red Bar] ELS (S1) Removal																
<b>Tunnel Portion 5 (CH3400-CH3425)</b>																								
<b>Bay 13 (Eastern End Bay)</b>																								
S9B-T5-B13-1020	Base Slab - Rebar Fixing	10	0	11-Feb-17 A	30-Mar-17 A		Calendar Day	[Green Bar] Base Slab - Rebar Fixing																
S9B-T5-B13-1030	Base Slab - Concrete	1	0	31-Mar-17 A	31-Mar-17 A		Calendar Day	[Green Bar] Base Slab - Concrete																
S9B-T5-B13-1040	Base Slab - Curing	4	0	01-Apr-17 A	04-Apr-17 A		Calendar Day	[Green Bar] Base Slab - Curing																
S9B-T5-B13-1050	Wall (North) - Waterproofing & Working Platform	4	0	10-Apr-17 A	14-Apr-17 A		Calendar Day	[Green Bar] Wall (North) - Waterproofing & Working Platform																
S9B-T5-B13-1060	Wall (North) - Rebar Fixing	3	0	15-Apr-17 A	17-Apr-17 A		Calendar Day	[Green Bar] Wall (North) - Rebar Fixing																
S9B-T5-B13-1070	Wall (North) - Formwork	2	0	18-Apr-17 A	19-Apr-17 A		Calendar Day	[Green Bar] Wall (North) - Formwork																
S9B-T5-B13-1080	Wall (North) - Concrete	1	1	20-Apr-17	20-Apr-17	-546	Calendar Day	[Red Bar] Wall (North) - Concrete, Wall (North) - Concrete																
S9B-T5-B13-1090	Wall (North) - Curing & Formwork Dismantling	3	3	21-Apr-17	23-Apr-17	-546	Calendar Day	[Red Bar] Wall (North) - Curing & Formwork Dismantling, Wall (North) - Curing & Formwork Dismantling																
S9B-T5-B13-1100	Wall (South) - Waterproofing & Working Platform	4	0	10-Apr-17 A	13-Apr-17 A		Calendar Day	[Green Bar] Wall (South) - Waterproofing & Working Platform																
S9B-T5-B13-1110	Wall (South) - Rebar Fixing	3	0	14-Apr-17 A	16-Apr-17 A		Calendar Day	[Green Bar] Wall (South) - Rebar Fixing																
S9B-T5-B13-1120	Wall (South) - Formwork	2	0	17-Apr-17 A	18-Apr-17 A		Calendar Day	[Green Bar] Wall (South) - Formwork																
S9B-T5-B13-1130	Wall (South) - Concrete	1	0	19-Apr-17 A	19-Apr-17 A		Calendar Day	[Red Bar] Wall (South) - Concrete																
S9B-T5-B13-1140	Wall (South) - Curing & Formwork Dismantling	3	3	20-Apr-17	22-Apr-17	-549	Calendar Day	[Red Bar] Wall (South) - Curing & Formwork Dismantling, Wall (South) - Curing & Formwork Dismantling																
S9B-T5-B13-1150	Wall (Middle) - Rebar Fixing & Working Platform	4	0	12-Mar-17 A	12-Apr-17 A		Calendar Day	[Green Bar] Wall (Middle) - Rebar Fixing & Working Platform																
S9B-T5-B13-1160	Wall (Middle) - Formwork	2	0	13-Apr-17 A	14-Apr-17 A		Calendar Day	[Green Bar] Wall (Middle) - Formwork																
S9B-T5-B13-1170	Wall (Middle) - Concrete	1	0	15-Apr-17 A	15-Apr-17 A		Calendar Day	[Red Bar] Wall (Middle) - Concrete																
S9B-T5-B13-1180	Wall (Middle) - Curing & Formwork Dismantling	3	0	16-Apr-17 A	19-Apr-17 A		Calendar Day	[Green Bar] Wall (Middle) - Curing & Formwork Dismantling																
S9B-T5-B13-1185	Construct Roadside Barriers	6	2	12-Apr-17 A	21-Apr-17	-549	Calendar Day	[Red Bar] Construct Roadside Barriers, Construct Roadside Barriers																
S9B-T5-B13-1230	OHVD Base Slab (North) - Scaffolding Erection	10	10	22-Apr-17	01-May-17	-549	Calendar Day	[Red Bar] OHVD Base Slab (North) - Scaffolding Erection, OHVD Base Slab (North) - Scaffolding Erection																
S9B-T5-B13-1240	OHVD Base Slab (North) - Formwork & Rebar Fixing	7	7	29-Apr-17	05-May-17	-546	Calendar Day	[Red Bar] OHVD Base Slab (North) - Formwork & Rebar Fixing, OHVD Base Slab (North) - Formwork & Rebar Fixing																
S9B-T5-B13-1250	OHVD Base Slab (North) - Concrete & Curing	2	2	06-May-17	07-May-17	-546	Calendar Day	[Red Bar] OHVD Base Slab (North) - Concrete & Curing, OHVD Base Slab (North) - Concrete & Curing																

- ◆ Milestone
- ◆ Critical Milestones
- [Green Bar] Current Works
- [Red Bar] Critical Works
- [Green Bar] Remaining Level of Effort

**CHUN WO - CRGL  
JOINT VENTURE**

**CEDD CONTRACT NO. HK/2009/02  
WD II - Central Wanchai Bypass at Wan Chai East (Contract 2)  
3-MONTH ROLLING PROGRAMME (dd 20-Apr-17)**

Date	Revision	Checked	Approved
	Rev. Programme (08-Apr-...		



















Activity ID	Activity Name	Original Duration	Start	Finish	2017																		
					Apr			May			Jun			Jul									
<b>Total</b>		1791d	21-Mar-13 A	09-Feb-18																			
<b>DWP-07 - (6) - Update Progress As of 20 Apr 17</b>		1791d	21-Mar-13 A	09-Feb-18																			
<b>Works in KD2</b>		95d	01-Mar-17 A	03-Jun-17																			
<b>Works in TS3-East</b>		95d	01-Mar-17 A	03-Jun-17																			
<b>Removal of Temporary Reclamation at TS3(E)</b>		95d	01-Mar-17 A	03-Jun-17																			
<b>TS3E Remaining Works &amp; TS3E/TS3W, TS3E/TS2 Stitching Works</b>		95d	01-Mar-17 A	03-Jun-17																			
<b>West Bound Tunnel (W/B)</b>		91d	01-Mar-17 A	30-May-17																			
<b>Outstanding Reinforced Concrete Works</b>		91d	01-Mar-17 A	30-May-17																			
A6570	General Cleaning Works for the Tunnel, CCTV and Pipe WaterJack Cleaning	10d	01-Mar-17 A	07-Apr-17 A																			
A6580	Joint Site Walk	5d	20-Apr-17	24-Apr-17																			
A6590	Handover Date	1d	30-May-17	30-May-17																			
<b>Stitching of TS2 &amp; TS3E (5.0 m Tunnel Length for Base Slab, Roof Slab, Approx. 15 m length for OHVD)</b>		40d	20-Apr-17	29-May-17																			
A6650	TS2/TS3E OHVD (Hindrance: Falsework Erection and Rebar Lifting) - 10 days	23d	20-Apr-17	12-May-17																			
A6660	Falsework Removal for OHVD - 7 days	7d	23-May-17	29-May-17																			
<b>Profile Barrier and Maintenance Walkway</b>		8d	20-Apr-17	27-Apr-17																			
A6700	Install Precast Concrete Covers on Cable Trough (2 X 90m)	8d	20-Apr-17	27-Apr-17																			
<b>East Bound Tunnel (E/B)</b>		62d	06-Mar-17 A	03-Jun-17																			
<b>Outstanding Reinforced Concrete Works</b>		62d	06-Mar-17 A	03-Jun-17																			
A6950	General Cleaning Works for the Tunnel	25d	11-Mar-17 A	23-Mar-17 A																			
A6960	Joint Site Walk	5d	29-May-17	02-Jun-17																			
A6970	Handover Date	1d	03-Jun-17	03-Jun-17																			
<b>Stitching of TS2 &amp; TS3E (5.0 m Length for Base Slab, Roof Slab, Approx. 15 m length for OHVD)</b>		56d	06-Mar-17 A	28-May-17																			
A6860	TS2/TS3E OHVD (Hindrance: Falsework Erection and Rebar Lifting) - 10 days	10d	06-Mar-17 A	11-May-17																			
A6870	Falsework Removal for OHVD - 7 days	7d	22-May-17	28-May-17																			
<b>Profile Barrier and Maintenance Walkway</b>		8d	24-Mar-17 A	31-Mar-17 A																			
A6910	Install Precast Concrete Covers on Cable Trough (2 X 90m)	8d	24-Mar-17 A	31-Mar-17 A																			
<b>Works in KD7</b>		81d	04-Mar-17 A	08-Jun-17																			
<b>Works in TS3-West</b>		81d	04-Mar-17 A	08-Jun-17																			
<b>Tunnel Structure</b>		81d	04-Mar-17 A	08-Jun-17																			
<b>Earthwork Backfilling, ELS Removal and Water Recharging</b>		38d	04-Mar-17 A	06-Apr-17 A																			
<b>East Portion</b>		38d	04-Mar-17 A	30-Mar-17 A																			
A2490	Stage 4 Backfilling- 25000 m3 (-14mPD~ -7.0 mPD, Bay 2- Bay 4) - 1000 m3 per day	19d	04-Mar-17 A	22-Mar-17 A																			
A2520	Stage 5 Backfilling ~ 15000 m3 (-30 mPD ~ -7.0 mPD, Bay 1) ~ 1000 m3 per day	10d	22-Mar-17 A	28-Mar-17 A																			
A2500	Removal of 2nd Layer ELS and Removal of Reprop inside Tunnel (Bay 2- Bay 4)	7d	23-Mar-17 A	26-Mar-17 A																			
A2510	Closure of wall opening in Bay 1 of CCT (Wall 4 and Wall 5)	14d	23-Mar-17 A	26-Mar-17 A																			
A2530	Removal of 2nd Layer ELS (Bay 1)	5d	29-Mar-17 A	30-Mar-17 A																			
<b>West Portion</b>		6d	10-Mar-17 A	20-Mar-17 A																			
A2550	Removal of 2nd Layer ELS - 6 days	6d	10-Mar-17 A	20-Mar-17 A																			
<b>Water Recharge (CNY- 27/1- 2/2)</b>		1d	31-Mar-17 A	06-Apr-17 A																			
A2560	Water Re-charge to ELS Cofferdam	1d	31-Mar-17 A	06-Apr-17 A																			
<b>Skin Wall Removal Works between TS4/TS3W and Shaft D Closure</b>		81d	23-Mar-17 A	08-Jun-17																			
A2590	Skin Wall Removal Works between TS4/TS3W - 20 days (2nd stage) - After Tunnel Roof Slab Completion - E/B and W/B	20d	23-Mar-17 A	09-May-17																			
A2600	Construction of Remaining Tunnel Structure between CH. 4260.2- 4265.2 at SOL T100 for Mainline E/B, W/B, SR8	30d	10-May-17	08-Jun-17																			

- Actual Work
- Remaining Work
- Critical Remaining Work
- ◆ Milestone

Date	Revision	Checked	Approved
20-Apr-17	DWP-07 (6) - 3 Months Rolling	FS	TL

Activity ID	Activity Name	Original Duration	Start	Finish	2017					
					Apr	May	Jun	Jul		
<b>Removal Bulkhead at CH525 (TS3W / SR8 Junction)</b>										
A6080	Remove Bulkhead between TS3W & SR8	37d	06-Mar-17 A	13-Apr-17 A	Remove Bulkhead between TS3W & SR8					
A5180	Remove Scaffolding of SR1R Roof	4d	22-Mar-17 A	25-Mar-17 A	of SR1R Roof					
<b>Works in KD8</b>										
<b>TS3W - Remove Temporary Reclamation</b>										
<b>Stage 1 - North West Corner (Bay Z4-25 to Bay 20)</b>										
A2660	Remove filled material to -4.35mPD at Bay Z4-25 to Bay 19 (6,500m3)	8d	09-Mar-17 A	24-Mar-17 A	Remove filled material to -4.35mPD at Bay Z4-25 to Bay 19 (6,500m3)					
A2670	Remove filled material to -4.35mPD at Bay Z4-22 to Z4-24 (4,500m3)	5d	25-Mar-17 A	14-Apr-17 A	Remove filled material to -4.35mPD at Bay Z4-22 to Z4-24 (4,500m3)					
A2680	Remove seawall blocks at Bay Z4-25 to Bay 20 (426 nos.)	8d	27-Mar-17 A	10-Apr-17 A	Remove seawall blocks at Bay Z4-25 to Bay 20 (426 nos.)					
A6260	Remove filled material to -7.0 mPD	4d	05-Apr-17 A	13-Apr-17 A	Remove filled material to -7.0 mPD					
<b>Stage 2 - North to East Side (Bay 19 to Bay 11 + Bay 26 to Bay 28)</b>										
A2690	Break concrete slab at Bay 19 to Bay 11 + Bay 26 to Bay 28 (2,500m2)	7d	24-Mar-17 A	31-Mar-17 A	Break concrete slab at Bay 19 to Bay 11 + Bay 26 to Bay 28 (2,500m2)					
A2700	Remove filled material to +2.8mPD (2,500m3)	7d	01-Apr-17 A	07-Apr-17 A	Remove filled material to +2.8mPD (2,500m3)					
<b>Stage 3 - North to East Side (Bay 19 to bay 26)</b>										
A2710	Completion of Recharging of Sea Water into TS3W Cofferdam	2d	31-Mar-17 A	04-Apr-17 A	Completion of Recharging of Sea Water into TS3W Cofferdam					
<b>North West D-wall Opening</b>										
A2720	Core D-wall cut holes at Panel DW02 to NA6 (27 nos.)	6d	07-Apr-17 A	10-Apr-17 A	Core D-wall cut holes at Panel DW02 to NA6 (27 nos.)					
A2730	Vertical cut at Panel DW02 to NA6 (19 nos.)	8d	14-Apr-17 A	20-Apr-17 A	Vertical cut at Panel DW02 to NA6 (19 nos.)					
A2740	Horizontal cut at Panel DW02 to NA6 (25 nos.)	8d	21-Apr-17 A	29-Apr-17 A	Horizontal cut at Panel DW02 to NA6 (25 nos.)					
<b>North East &amp; East</b>										
A2750	Remove filled material to -4.35mPD (22,500m3)	9d	13-Apr-17 A	26-Apr-17	Remove filled material to -4.35mPD (22,500m3)					
A2760	Remove seawall blocks at Bay 19 to 11 & Bay 26 to 28 (1,335 nos.)	13d	20-Apr-17 A	29-Apr-17	Remove seawall blocks at Bay 19 to 11 & Bay 26 to 28 (1,335 nos.)					
A2770	Remove filled material to -7.0mPD (North & East side)	10d	29-Apr-17 A	01-May-17	Remove filled material to -7.0mPD (North & East side)					
<b>Stage 4 - West &amp; South Side (Remove Seawall Block Bay Z4-23 &amp; 24, Excavate to -4.35mPD)</b>										
<b>West Side</b>										
A2790	Remove seawall blocks at Bay Bay Z4-23 to Z4-24 (249 nos.)	5d	31-Mar-17 A	02-May-17	Remove seawall blocks at Bay Bay Z4-23 to Z4-24 (249 nos.)					
A2800	Remove filled material to -7.0mPD (West)	5d	03-May-17	07-May-17	Remove filled material to -7.0mPD (West)					
<b>North East Side</b>										
A2810	Core D-wall cut holes at Panel W1D1 to W1D32 (128 nos.) (North Side)	14d	19-Apr-17 A	26-Apr-17 A	Core D-wall cut holes at Panel W1D1 to W1D32 (128 nos.) (North Side)					
A2820	Vertical cut at Panel W1D1 to W1D32 (96 nos.) (North Side)	16d	27-Apr-17 A	08-May-17	Vertical cut at Panel W1D1 to W1D32 (96 nos.) (North Side)					
A2830	Horizontal cut at Panel W1D1 to W1D32 (128 nos.) (North Side)	20d	17-May-17	05-Jun-17	Horizontal cut at Panel W1D1 to W1D32 (128 nos.) (North Side)					
<b>East Side</b>										
A2840	Core D-wall cut holes at Panel TZ31 to TZ38 (32 nos.) (East Side)	10d	20-Apr-17 A	26-Apr-17 A	Core D-wall cut holes at Panel TZ31 to TZ38 (32 nos.) (East Side)					
A2850	Vertical cut at Panel TZ31 to TZ38 (24 nos.) (East Side)	9d	16-May-17	24-May-17	Vertical cut at Panel TZ31 to TZ38 (24 nos.) (East Side)					
A2860	Horizontal cut at Panel TZ31 to TZ38 (32 nos.) (East Side)	10d	25-May-17	03-Jun-17	Horizontal cut at Panel TZ31 to TZ38 (32 nos.) (East Side)					
<b>South Side</b>										
A2870	Remove filled material to -4.35mPD (41,300m3)	30d	20-Apr-17	19-May-17	Remove filled material to -4.35mPD (41,300m3)					
<b>Stage 5 - West &amp; South side (Reove Seawall Block Bay 24 7 25, Excavate to -7.0mPD)</b>										
A2910	Core D-wall cut holes at Panel BWD2 to BWD9 (30 nos.) (West Side)	5d	12-Apr-17 A	17-Apr-17 A	Core D-wall cut holes at Panel BWD2 to BWD9 (30 nos.) (West Side)					
A2920	Vertical cut at Panel BWD2 to BWD9 (22 nos.) (West Side)	8d	08-May-17	15-May-17	Vertical cut at Panel BWD2 to BWD9 (22 nos.) (West Side)					
A2930	Horizontal cut at Panel BWD2 to BWD9 (29 nos.) (West Side)	8d	16-May-17	23-May-17	Horizontal cut at Panel BWD2 to BWD9 (29 nos.) (West Side)					
A2880	Remove seawall blocks at Bay 24, 25 (264 nos.) (South West)	6d	20-May-17	25-May-17	Remove seawall blocks at Bay 24, 25 (264 nos.) (South West)					
A2890	Remove seawall blocks at Bay 2 to 4 (550 nos.) (South East)	11d	20-May-17	30-May-17	Remove seawall blocks at Bay 2 to 4 (550 nos.) (South East)					
A2900	Remove filled material to -7.0mPD (South)	7d	31-May-17	06-Jun-17	Remove filled material to -7.0mPD (South)					

Activity ID	Activity Name	Original Duration	Start	Finish	2017				
					Apr	May	Jun	Jul	
<b>Stage 6 - West &amp; South Side (Saw Cut D-wall + Shaft D)</b>									
A2940	Remove fill material to -7.0mPD around shaft D	5d	24-May-17	28-May-17					
A2950	Core D-wall cut holes at Panel W2D1 to W2D18 (72 nos.) (South West)	9d	07-Jun-17	15-Jun-17					
A2980	Core D-wall cut holes at Panel W2D23 to W2D34 (50 nos.) (South East)	10d	07-Jun-17	16-Jun-17					
A2990	Vertical cut at Panel W2D23 to W2D34 (38 nos.) (South East)	13d	11-Jun-17	23-Jun-17					
A2960	Vertical cut at Panel W2D1 to W2D18 (54 nos.) (South West)	18d	15-Jun-17	02-Jul-17					
A3000	Horizontal cut at Panel W2D23 to W2D34 (50 nos.) (South East)	13d	18-Jun-17	30-Jun-17					
A2970	Horizontal cut at Panel W2D1 to W2D18 (72 nos.) (South West)	18d	23-Jun-17	10-Jul-17					
<b>Stage 7 - West &amp; South Side (Saw Cut Shaft D, Excavate to -7.0mPD at SR8)</b>									
A3010	Vertical cut at Shaft D (14 nos.)	10d	29-May-17	07-Jun-17					
A3020	Horizontal cut at Shaft D (14 nos.)	5d	08-Jun-17	12-Jun-17					
A3030	Remove filled material to -7.0mPD at SR8	7d	01-Jul-17	07-Jul-17					
<b>Stage 8 - South East &amp; West Side (Remove Seawall Block Bay Z4-22 to Bay 23, Saw Cut D-wall at SR8)</b>									
<b>South West Side</b>									
A3040	Remove seawall blocks at Bay Z4-22 to Bay 23 (741 nos.)	15d	13-Jun-17	27-Jun-17					
A3050	Remove filled material to -7.0mPD (South West)	8d	28-Jun-17	05-Jul-17					
A3060	Vertical cut at Panel BWD10 to SA7 (26 nos.) (South West)	9d	06-Jul-17	14-Jul-17					
A3070	Horizontal cut at Panel BWD10 to SA7 (37 nos.) (South West)	10d	15-Jul-17	24-Jul-17					
<b>SR08 - West Wall</b>									
A3080	Vertical cut at Panel W4D1 to W4D11 (28 nos.) (SR8)	10d	08-Jul-17	17-Jul-17					
A3090	Horizontal cut at Panel W4D1 to W4D11 (39 nos.) (SR8)	11d	18-Jul-17	28-Jul-17					
<b>SR08 - East Wall</b>									
A7010	Vertical cut at Panel W4D1 to W4D11 (26 nos.)	9d	08-Jul-17	16-Jul-17					
A7020	Horizontal cut at Panel W3D1 to W3D7 (36 nos.)	10d	17-Jul-17	26-Jul-17					
<b>Works in KD6</b>									
<b>Works in SR8 (Open Cut Method)</b>									
<b>SR8 (Zone C) - Ch. 528 to Ch. 368</b>									
<b>Zone C - Tunnel Structure</b>									
<b>1.2m Thick Base Slab</b>									
<b>Bay C6</b>									
A7540	C6 - Remove Strut SL5 & SL3	2d	26-Feb-17 A	21-Apr-17					
<b>1.0m Thick Wall at Both Side</b>									
<b>LHS Wall</b>									
A7340	5th Pour - CH500 to CH525	7d	22-Apr-17	28-Apr-17					
<b>200mm Thick OHVD Slab &amp; 400mm Thick Hanger Wall</b>									
<b>Bay C6</b>									
A7570	C6 - Construct OHVD Slab & Hanger Wall	9d	01-May-17	09-May-17					
<b>1.2m Thick Roof Slab</b>									
<b>Bay C4</b>									
A7610	C4 - Roof Slab Construction	13d	14-Feb-17 A	24-Mar-17 A					
<b>Bay C5</b>									
A7620	C5 - Roof Slab Construction	8d	16-Mar-17 A	25-Mar-17 A					
<b>Bay C6</b>									
A7630	C6 - Partial Roof + Up Stand Wall Construction for Access Shaft	9d	23-Mar-17 A	08-May-17					

Activity ID	Activity Name	Original Duration	Start	Finish	2017											
					Apr	May	Jun	Jul								
<b>Egress Passage - EP01</b>		31d	13-Mar-17 A	24-Apr-17 A												
<b>Bay C1</b>		31d	13-Mar-17 A	14-Apr-17 A												
A7690	C1 - EP01 Wall Construction	9d	13-Mar-17 A	30-Mar-17 A	Wall Construction											
A7700	C1 - EP01 Roof Construction	8d	13-Mar-17 A	30-Mar-17 A	Roof Construction											
A8010	C1 - Dismantle Scaffolding of EP01 Roof Slab - 10 days Curing	14d	31-Mar-17 A	14-Apr-17 A	C1 - Dismantle Scaffolding of EP01 Roof Slab - 10 days Curing											
<b>Bay C2</b>		31d	13-Mar-17 A	14-Apr-17 A												
A7710	C2 - EP01 Wall Construction	9d	13-Mar-17 A	30-Mar-17 A	Wall Construction											
A7720	C2 - EP01 Roof Construction	8d	13-Mar-17 A	30-Mar-17 A	Roof Construction											
A8020	C2 - Dismantle Scaffolding of EP01 Roof Slab - 10 days Curing	14d	31-Mar-17 A	14-Apr-17 A	C2 - Dismantle Scaffolding of EP01 Roof Slab - 10 days Curing											
<b>Bay C3</b>		31d	20-Mar-17 A	24-Apr-17 A												
A7730	C3 - EP01 Wall Construction	9d	20-Mar-17 A	05-Apr-17 A	C3 - EP01 Wall Construction											
A7740	C3 - EP01 Roof Construction	8d	20-Mar-17 A	05-Apr-17 A	C3 - EP01 Roof Construction											
A8030	C3 - Dismantle Scaffolding of EP01 Roof Slab - 10 days Curing	14d	06-Apr-17 A	24-Apr-17 A	C3 - Dismantle Scaffolding of EP01 Roof Slab - 10 days Curing											
<b>Bay C4</b>		31d	20-Mar-17 A	24-Apr-17 A												
A7750	C4 - EP01 Wall Construction	9d	20-Mar-17 A	05-Apr-17 A	C4 - EP01 Wall Construction											
A7760	C4 - EP01 Roof Construction	8d	20-Mar-17 A	05-Apr-17 A	C4 - EP01 Roof Construction											
A8040	C4 - Dismantle Scaffolding of EP01 Roof Slab - 10 days Curing	14d	06-Apr-17 A	24-Apr-17 A	C4 - Dismantle Scaffolding of EP01 Roof Slab - 10 days Curing											
<b>Utility Trough</b>		27d	20-Apr-17	16-May-17												
<b>Bay C1</b>		16d	20-Apr-17	05-May-17												
A7790	RHS / C1 - Backing Concrete	4d	20-Apr-17	23-Apr-17	RHS / C1 - Backing Concrete											
A7800	RHS / C1 - Profile Barrier	4d	24-Apr-17	27-Apr-17	RHS / C1 - Profile Barrier											
A7770	LHS / C1 - Backing Concrete	4d	28-Apr-17	01-May-17	LHS / C1 - Backing Concrete											
A7780	LHS / C1 - Profile Barrier	4d	02-May-17	05-May-17	LHS / C1 - Profile Barrier											
<b>Bay C2</b>		16d	20-Apr-17	05-May-17												
A7830	RHS / C2 - Backing Concrete	4d	20-Apr-17	23-Apr-17	RHS / C2 - Backing Concrete											
A7840	RHS / C2 - Profile Barrier	4d	24-Apr-17	27-Apr-17	RHS / C2 - Profile Barrier											
A7810	LHS / C2 - Backing Concrete	4d	28-Apr-17	01-May-17	LHS / C2 - Backing Concrete											
A7820	LHS / C2 - Profile Barrier	4d	02-May-17	05-May-17	LHS / C2 - Profile Barrier											
<b>Bay C3</b>		16d	20-Apr-17	05-May-17												
A7870	RHS / C3 - Backing Concrete	4d	20-Apr-17	23-Apr-17	RHS / C3 - Backing Concrete											
A7880	RHS / C3 - Profile Barrier	4d	24-Apr-17	27-Apr-17	RHS / C3 - Profile Barrier											
A7850	LHS / C3 - Backing Concrete	4d	28-Apr-17	01-May-17	LHS / C3 - Backing Concrete											
A7860	LHS / C3 - Profile Barrier	4d	02-May-17	05-May-17	LHS / C3 - Profile Barrier											
<b>Bay C4</b>		16d	20-Apr-17	05-May-17												
A7910	RHS / C4 - Backing Concrete	4d	20-Apr-17	23-Apr-17	RHS / C4 - Backing Concrete											
A7920	RHS / C4 - Profile Barrier	4d	24-Apr-17	27-Apr-17	RHS / C4 - Profile Barrier											
A7890	LHS / C4 - Backing Concrete	4d	28-Apr-17	01-May-17	LHS / C4 - Backing Concrete											
A7900	LHS / C4 - Profile Barrier	4d	02-May-17	05-May-17	LHS / C4 - Profile Barrier											
<b>Bay C5</b>		16d	01-May-17	16-May-17												
A7950	RHS / C5 - Backing Concrete	4d	01-May-17	04-May-17	RHS / C5 - Backing Concrete											
A7960	RHS / C5 - Profile Barrier	4d	05-May-17	08-May-17	RHS / C5 - Profile Barrier											
A7930	LHS / C5 - Backing Concrete	4d	09-May-17	12-May-17	LHS / C5 - Backing Concrete											
A7940	LHS / C5 - Profile Barrier	4d	13-May-17	16-May-17	LHS / C5 - Profile Barrier											
<b>SR8 (Zone B) - Ch.385.000 to Ch.317.500 - (Inside Victoria Park to Tunnel Portal)</b>		77d	20-Apr-17	05-Jul-17												

Activity ID	Activity Name	Original Duration	Start	Finish	2017				
					Apr	May	Jun	Jul	
<b>SR8 (Zone B) Tunnel - ELS / CCT / BF Works ( 7 Bays Ch. 385.000 to Ch.317.500)</b>									
<b>Portal Structure</b>									
<b>OHVD</b>									
<b>Bay B1 + B2 (CH338.625 to CH368)</b>									
SR8_ZB_1390	Zone B - OHVD - Erect Scaffolding & Soffit Formwork	6d	20-Apr-17	25-Apr-17	Zone B - OHVD - Erect Scaffolding & Soffit Formwork				
SR8_ZB_1400	Zone B - Redrill & Install Rebar on Soffit of Roof Slab	10d	26-Apr-17	05-May-17	Zone B - Redrill & Install Rebar on Soffit of Roof Slab				
SR8_ZB_1420	Zone B - OHVD - Rebar Fixing for Slab & Hanger Wall of OHVD	4d	06-May-17	10-May-17	Zone B - OHVD - Rebar Fixing for Slab & Hanger Wall of OHVD				
SR8_ZB_1430	Zone B - OHVD Erect Hanger Wall Formwork for OHVD	2d	11-May-17	12-May-17	Zone B - OHVD Erect Hanger Wall Formwork for OHVD				
SR8_ZB_1440	Zone B - OHVD Place Concrete to OHVD Slab & Wall	1d	13-May-17	13-May-17	Zone B - OHVD Place Concrete to OHVD Slab & Wall				
SR8_ZB_1450	Zone B - OHVD Curing Period for OHVD Slab	10d	15-May-17	25-May-17	Zone B - OHVD Curing Period for OHVD Slab				
SR8_ZB_1460	Zone B - OHVD Remove Soffit Formwork & Scaffolding	5d	26-May-17	01-Jun-17	Zone B - OHVD Remove Soffit Formwork & Scaffolding				
<b>Utility Trough</b>									
<b>Left Hand Side</b>									
SR8_ZB_1570	Zone B - U trough (LHS) Bay 3	7d	10-Jun-17	17-Jun-17			Zone B - U trough (LHS) Bay 3		
SR8_ZB_1560	Zone B - U trough (LHS) Bay 2	7d	19-Jun-17	26-Jun-17			Zone B - U trough (LHS) Bay 2		
SR8_ZB_1550	Zone B - U trough (LHS) Bay 1	7d	27-Jun-17	05-Jul-17			Zone B - U trough (LHS) Bay 1		
<b>Right Hand Side</b>									
SR8_ZB_1600	Zone B - U trough (RHS) Bay 3	7d	02-Jun-17	09-Jun-17			Zone B - U trough (RHS) Bay 3		
SR8_ZB_1590	Zone B - U trough (RHS) Bay 2	7d	10-Jun-17	17-Jun-17			Zone B - U trough (RHS) Bay 2		
SR8_ZB_1580	Zone B - U trough (RHS) Bay 1	7d	19-Jun-17	26-Jun-17			Zone B - U trough (RHS) Bay 1		
<b>Pump House</b>									
<b>Remining Works inside Pump Sump E</b>									
SR8_ZB_1890	Steel Works Installation inside Pump Sump E	45d	20-Apr-17	03-Jun-17	Steel Works Installation inside Pump Sump E				
SR8_ZB_1900	Installation Manhole Covers for Pump Sump E	7d	04-Jun-17	10-Jun-17	Installation Manhole Covers for Pump Sump E				
<b>SR8 (Zone A) - Ch 317.500 to Ch 210.000 - U-Structure &amp; Slab (Victoria Park)</b>									
<b>RC CCT &amp; Backfill Ch317.5000 to Ch240.000</b>									
<b>Structure</b>									
<b>Utility Through</b>									
SR8_ZA_1260	Zone A - Utility Trough for Zone A (CH240 to CH317)	28d	22-Jan-17 A	26-May-17	Zone A - Utility Trough for Zone A (CH240 to CH317)				
<b>Works in KD9 (Include Re-provisioning Works of KD4,KD5)</b>									
<b>External Works Under KD9</b>									
<b>Tsing Fung St - RW &amp; Subway Extension &amp; Toe Wall at Hing Fat St</b>									
<b>Retaining Wall + Toe Wall at Hing Fat Street</b>									
<b>Retaining Wall RW8D</b>									
<b>Bay 3(10m) to Bay 4(10m)</b>									
RW8D_1220	RW8D (Bay 3 to Bay 4) - Sub-soil & Backfilling to Base Slab	6d	23-Jan-17 A	23-Mar-17 A	- Sub-soil & Backfilling to Base Slab				
<b>Works along RW8D During Reopen Hing Fat Street Footpath to Public</b>									
A4910	Close slow lane of HFS to cut coping of RW8D and subway	20d	01-Mar-17 A	26-Apr-17 A	Close slow lane of HFS to cut coping of RW8D and subway				
A4920	Lay temp bituminous pavement for road diversion (from RW8D to Subway)	3d	20-Apr-17	22-Apr-17	Lay temp bituminous pavement for road diversion (from RW8D to Subway)				
A4940	Install steel vehicle parapet on RW8C, subway and RW8D	10d	20-Apr-17	02-May-17	Install steel vehicle parapet on RW8C, subway and RW8D				
<b>Retaining Walls RW8E, Sign Footings &amp; Sewer Pipe (SK266G, SK539C, SK375B)</b>									
A4615	Re-occupy Hing Fat Street Footpath as site Area	1d	20-Mar-17 A	20-Mar-17 A	Footpath as site Area				
A4620	Excavate and lay blinding layer of RW8E ( Including ELS )	14d	19-Apr-17 A	08-May-17	Excavate and lay blinding layer of RW8E ( Including ELS )				
A4880	DS16 - Sign Frame Installation	14d	20-Apr-17	03-May-17	DS16 - Sign Frame Installation				

Activity ID	Activity Name	Original Duration	Start	Finish	2017			
					Apr	May	Jun	Jul
A4650	MH2-70 to MH2-71(150 dia. foul sewer pipe)	12d	20-Apr-17	05-May-17		MH2-70 to MH2-71(150 dia. foul sewer pipe)		
A4630	Construction of RW8E and toe wall (2+1 bays, 32m long)	45d	09-May-17	30-Jun-17			Construction of RW8E and toe wall (2+1 bays, 32m long)	
A4640	Backfill and subsoil drainage system behind RW8E	14d	03-Jul-17	18-Jul-17			Backfill and subsoil drainage system behind RW8E	
A4670	MH2-72 to MH2-73	12d	19-Jul-17	01-Aug-17				MH2-72 to MH2-73
<b>Storm Drain Pipe behind RW8C along Tsing Fung Street (SK547A)</b>		42d	20-Apr-17	10-Jun-17				
A4540	Modified MH shaft A2 at extg box culvert near MH TFS-04A	14d	20-Apr-17*	08-May-17		Modified MH shaft A2 at extg box culvert near MH TFS-04A		
A6410	MHTFS-06 to extg MH A3 (at slow lane of TFS)	14d	09-May-17	24-May-17		MHTFS-06 to extg MH A3 (at slow lane of TFS)		
A8050	MHTFS-05 to extg MH A3 (gully)	14d	25-May-17	10-Jun-17			MHTFS-05 to extg MH A3 (gully)	
<b>Sign Footings at Victoria Park</b>		75d	20-Apr-17	20-Jul-17				
A4570	Construction of 5m CCTV, AID, OHVD, TSG, luminance meter at verge inside VP	60d	20-Apr-17*	03-Jul-17			Construction of 5m CCTV, AID, OHVD, TSG, luminance meter at verge inside VP	
A4580	All drawpits (ATC, E&M and lighting) and ductings at verge inside VP (SK375B)	60d	10-May-17	20-Jul-17			All drawpits (ATC, E&M and lighting) and ductings at verge inside VP (SK375B)	
<b>Boundary Fence, Type 2 Railing Footings &amp; Fence Wall From RW8C to Zone B</b>		242d	12-Dec-16 A	11-Sep-17				
A8070	Fence wall between BGO and Zone A (78.2m)	90d	12-Dec-16 A	03-Jul-17			Fence wall between BGO and Zone A (78.2m)	
A4700	Construction of boundary fence from RW8C toe wall to 15m CCTV high mast (approx. 53m)	50d	19-Dec-16 A	20-May-17		Construction of boundary fence from RW8C toe wall to 15m CCTV high mast (approx. 53m)		
A4710	Modification/ Re-construction of extg type 2 railing footing in front of RW8C (approx. 40m)	60d	10-Feb-17 A	01-Aug-17			Modification/ Re-construction of extg type 2 railing footing in front of RW8C (approx. 40m)	
A4720	Construction of boundary fence from 15m CCTV high mast to Zone A at CH210 (approx. 50m)	50d	22-May-17	20-Jul-17			Construction of boundary fence from 15m CCTV high mast to Zone A at CH210 (approx. 50m)	
A4730	Construction of boundary fence near nursery compound (approx. 167m, after completion of MH 2-73)	90d	27-May-17	11-Sep-17			Construction of boundary fence near nursery compound (approx. 167m, after completion of MH 2-73)	
<b>Other Storm, Sewerage Pipe &amp; Irrigation System in VP (SK336E, SK539D)</b>		141d	21-Feb-17 A	07-Aug-17				
A4770	MH2-71 to TFS-06 via MH2-72 and MH 2-73 (300 dia. concrete pipe)	40d	21-Feb-17 A	26-May-17		MH2-71 to TFS-06 via MH2-72 and MH 2-73 (300 dia. concrete pipe)		
A4740	FMH-B01 to Extg 1-40 (5 MHS and 7 foul sewer PE pipeline)	90d	20-Apr-17	07-Aug-17			FMH-B01 to Extg 1-40 (5 MHS and 7 foul sewer PE pipeline)	
A4970	Irrigation Main Laying	14d	27-May-17	09-Jun-17		Irrigation Main Laying		
A4760	MHB (beside pump sump E) to MH2-70 (300 dia. stormwater pipeline)	14d	27-May-17	13-Jun-17		MHB (beside pump sump E) to MH2-70 (300 dia. stormwater pipeline)		
A4980	Water Points Installation	14d	10-Jun-17	23-Jun-17			Water Points Installation	
<b>Preparation Works before Implementation TTA at Central Median</b>		141d	02-Feb-17 A	20-Jul-17				
A4795	Excavate to formation level and lay subbase, fix K1 kerb along TFS	14d	02-Feb-17 A	05-May-17		Excavate to formation level and lay subbase, fix K1 kerb along TFS		
A4890	Laying Ducting Cross Access Ramp Down to Zone C SR8 Tunnel	60d	20-Apr-17	18-Jun-17			Laying Ducting Cross Access Ramp Down to Zone C SR8 Tunnel	
A4930	Shifting Site Entrance 6A	4d	19-Jun-17	22-Jun-17			Shifting Site Entrance 6A	
A4950	Laying Ducting in New SR8 Approaching Island	14d	23-Jun-17	06-Jul-17			Laying Ducting in New SR8 Approaching Island	
A5020	Forming Island Including Sub-base & Kerbing	14d	07-Jul-17	20-Jul-17			Forming Island Including Sub-base & Kerbing	
<b>Reverting Traffic for IEC,VP Rd &amp; TF St &amp; Seawall Reinstatement (KD9)</b>		98d	27-Mar-17 A	13-Aug-17				
<b>TTA Revert Traffic Back to Original Alignment</b>		98d	27-Mar-17 A	13-Aug-17				
<b>Preparation Works - Backfill of Zone C to Top of Tunnel Structure</b>		59d	27-Mar-17 A	16-Jun-17				
A5790	Waterproofing & Screeding to Roof	4d	27-Mar-17 A	14-May-17		Waterproofing & Screeding to Roof		
A5800	Load Transfer for King Post	6d	05-Apr-17 A	20-May-17		Load Transfer for King Post		
A5820	Zone C - Bay C1 to C5 Backfill to Formation & Remove Struts SL1 to SL3 (Up to +2.5mPD)	44d	10-Apr-17 A	16-Jun-17			Zone C - Bay C1 to C5 Backfill to Formation & Remove Struts SL1 to SL3 (Up to +2.5mPD)	
A5780	Curing to Roof Slab of Zone C	3d	08-May-17	10-May-17		Curing to Roof Slab of Zone C		
A5810	Make Good Box-out Left by King Post	2d	21-May-17	22-May-17		Make Good Box-out Left by King Post		
<b>East Bound TTA - IEC East Bound, Victoria Park Road &amp; Footpath along Sea Side</b>		30d	17-Jun-17	16-Jul-17				
<b>Stage 1 - IEC (East Bound)</b>		30d	17-Jun-17	16-Jul-17				
A5240	IEC/EB - Construct Footing of Sign Gantry & Wing Wall	17d	17-Jun-17	03-Jul-17			IEC/EB - Construct Footing of Sign Gantry & Wing Wall	
A5260	IEC/EB - Backfill to Formation Level (Approx. 2.2mPD to +3.9mPD)	5d	17-Jun-17	21-Jun-17			IEC/EB - Backfill to Formation Level (Approx. 2.2mPD to +3.9mPD)	
A5270	IEC/EB - Reconstruct Wing Wall of Abutment M (approx. 6m)	10d	17-Jun-17	26-Jun-17			IEC/EB - Reconstruct Wing Wall of Abutment M (approx. 6m)	
A5280	IEC/EB - Cast Central Median	21d	17-Jun-17	07-Jul-17			IEC/EB - Cast Central Median	
A5310	IEC/EB - Remove Temporary Utilities Supports at IEC	3d	17-Jun-17	19-Jun-17			IEC/EB - Remove Temporary Utilities Supports at IEC	



Activity ID	Activity Name	Original Duration	Start	Finish	2017																		
					Apr	May	Jun	Jul															
A3285	IEC/EB - Cut and Remove Pipe Pile (2m Below Ground Level)	7d	17-Jun-17	23-Jun-17																			
A5320	IEC/EB - Reinstate Existing Drainage System	14d	20-Jun-17	03-Jul-17																			
A3286	IEC/EB - Cut and Remove Sheet Pile (2m Below Ground Level)	7d	24-Jun-17	30-Jun-17																			
A5290	IEC/EB - Street Lighting Cable Duct & Poles	3d	01-Jul-17	03-Jul-17																			
A5250	IEC/EB - Install A Frame of Sign Gantry	4d	04-Jul-17	07-Jul-17																			
A5300	IEC/EB - TOC of Street Lightings	2d	04-Jul-17	05-Jul-17																			
A5330	IEC/EB - Backfill Drainage Trench Up to Formation (+2.5mPd to +3.9mPD)	5d	04-Jul-17	08-Jul-17																			
A5340	IEC/EB - Laying Sub-base	2d	09-Jul-17	10-Jul-17																			
A5350	IEC/EB - Laying Asphalt Pavement	3d	11-Jul-17	13-Jul-17																			
A5360	IEC/EB - Road Mark & Traffic Signs	3d	14-Jul-17	16-Jul-17																			
<b>West Bound - IEC West Bound &amp; Tsing Fung Street</b>		<b>58d</b>	<b>17-Jun-17</b>	<b>13-Aug-17</b>																			
<b>Stage 1 - IEC (West Bound)</b>		<b>30d</b>	<b>17-Jun-17</b>	<b>16-Jul-17</b>																			
A5690	IEC/WB - Cut pipe pile - 1 week	7d	17-Jun-17	23-Jun-17																			
A5710	IEC/WB - Removal of pedestrian decking	11d	17-Jun-17	27-Jun-17																			
A3785	IEC/WB - Reconstruct Wing Wall of Abutment M (approx. 6m)	10d	17-Jun-17	26-Jun-17																			
A5700	IEC/WB - Cut sheetpile - 1 week	7d	24-Jun-17	30-Jun-17																			
A5720	IEC/WB - Remove temporary utilities support 3 days	3d	28-Jun-17	30-Jun-17																			
A5730	IEC/WB - Backfill up to Formation under Asphalt (from +2.5mPD to +3.9mPD) 5 days	5d	01-Jul-17	05-Jul-17																			
A5740	IEC/WB - Subbase Laying 2 days	2d	06-Jul-17	07-Jul-17																			
A5750	IEC/WB - Asphalt (Road Base, Base Course, Wearing Course) 5 days	5d	08-Jul-17	12-Jul-17																			
A5760	IEC/WB - Road Marking/Traffic Sign 3 days	3d	13-Jul-17	15-Jul-17																			
A5840	IEC/WB - Implement TTM	1d	16-Jul-17	16-Jul-17																			
<b>Stage 2 - Tsing Fung Street</b>		<b>28d</b>	<b>17-Jul-17</b>	<b>13-Aug-17</b>																			
A5850	Decking /Footing Removal - 2 weeks	14d	17-Jul-17	30-Jul-17																			
A5880	Light Weight Conc. Ramp Rem. 4 weeks	28d	17-Jul-17	13-Aug-17																			
A5890	Trench Excavation for Towngas - 4 weeks	28d	17-Jul-17	13-Aug-17																			
<b>Reinstatement Existing Slopping &amp; Vertical Sea Wall</b>		<b>55d</b>	<b>17-Jun-17</b>	<b>10-Aug-17</b>																			
<b>Major Reinstatement Works for Seawall Reinstatement</b>		<b>55d</b>	<b>17-Jun-17</b>	<b>10-Aug-17</b>																			
<b>Stage 1 - Removal of Remaining Pipe Pile Wall, Sheet Pile Wall &amp; D-wall</b>		<b>55d</b>	<b>17-Jun-17</b>	<b>10-Aug-17</b>																			
A7030	Backfill upto +2.5mPD at all bay of SR8	1d	17-Jun-17	17-Jun-17																			
A7040	Cut pipe pile wall at A1 - A14	14d	18-Jun-17	01-Jul-17																			
A7050	Under water cut sheet pile wall (36 nos.)	40d	02-Jul-17	10-Aug-17																			
<b>Works in Victoria Park (KD4, KD5, KD9)</b>		<b>184d</b>	<b>20-Jan-17 A</b>	<b>06-Sep-17</b>																			
<b>Re-Provisioning Works</b>		<b>184d</b>	<b>20-Jan-17 A</b>	<b>06-Sep-17</b>																			
<b>Nursery Compound</b>		<b>184d</b>	<b>20-Jan-17 A</b>	<b>06-Sep-17</b>																			
<b>Submission</b>		<b>124d</b>	<b>20-Jan-17 A</b>	<b>27-Jun-17</b>																			
<b>ABWF Submission</b>		<b>99d</b>	<b>01-Feb-17 A</b>	<b>02-Jun-17</b>																			
<b>Material</b>		<b>99d</b>	<b>01-Feb-17 A</b>	<b>12-May-17</b>																			
VP_NC_1060	ABWF Issue P.O. / Manufacturing / Fabrication	14d	01-Feb-17 A	18-Apr-17 A																			
VP_NC_1070	ABWF Material Delivery	21d	19-Apr-17 A	12-May-17																			
<b>Shop Drawing</b>		<b>14d</b>	<b>03-Feb-17 A</b>	<b>02-Jun-17</b>																			
VP_NC_1090	ABWF Shop Drawing - ER Review and Approval	14d	03-Feb-17 A	02-Jun-17																			
<b>E&amp;M Submission</b>		<b>124d</b>	<b>20-Jan-17 A</b>	<b>27-Jun-17</b>																			
<b>Material</b>		<b>124d</b>	<b>20-Jan-17 A</b>	<b>27-Jun-17</b>																			

Activity ID	Activity Name	Original Duration	Start	Finish	2017			
					Apr	May	Jun	Jul
VP_NC_1140	E&M Issue P.O. / Manufacturing / Fabrication	15d	20-Jan-17 A	22-May-17	E&M Issue P.O. / Manufacturing / Fabrication			
VP_NC_1150	E&M Materail Delivery	30d	23-May-17	27-Jun-17	E&M Materail Delivery			
<b>Shop Drawing</b>		30d	20-Apr-17	26-May-17				
VP_NC_1170	E&M Shop Drawing - ER Review and Approval	30d	20-Apr-17	26-May-17	E&M Shop Drawing - ER Review and Approval			
<b>Nursery compound</b>		125d	09-Mar-17 A	06-Sep-17				
A4410	Concreting of two concrete plinths, 150 thick curbs and 1450H parapet wall above roof slab	7d	09-Mar-17 A	30-Mar-17 A	g of two concrete plinths, 150 thick curbs and 1450H parapet wall above roof slab			
A4420	ABWF, Plumbing Works, waterproofing and E&M works	60d	05-Apr-17 A	06-Sep-17				
<b>KD11, KD12, KD13, KD18 Establishment Works for Landscape Softworks</b>		1087d	23-Feb-15 A	09-Feb-18				
<b>KD11 - Section 7A: Portion XIV &amp; XV (Victoria Park Open Space)</b>		885d	23-Feb-15 A	09-Feb-18				
EW_1000	Establishment Works - for Landscape Softworks and transplanted trees in Portion XIV & XV	901d	23-Feb-15 A	09-Feb-18				
<b>KD12 - Section 7B: Portion VI &amp; VII (Reprov. Bowling Green Area)</b>		177d	03-Dec-15 A	20-Apr-17				
EW_1010	Establishment Works - for Landscape Softworks and transplanted trees in Portion VI & VII	177d	03-Dec-15 A	20-Apr-17	Establishment Works - for Landscape Softworks and transplanted trees in Portion VI & VII			
<b>KD10 - Preservation and Protection of Trees</b>		1088d	21-Mar-13 A	20-Apr-17				
PPT_0000	Preservation and Protection of Existing Trees	1088d	21-Mar-13 A	20-Apr-17	Preservation and Protection of Existing Trees			
<b>KD15 &amp; KD8 - Mooring Components Upkeep (CBTS and ATS)</b>		980d	15-May-14 A	20-Apr-17				
MAR_3020	Mooring Upkeep at Portion X(10) & XVI(16) - CBTS	979d	15-May-14 A	20-Apr-17	Mooring Upkeep at Portion X(10) & XVI(16) - CBTS			
<b>Works for Public Works Regional Laboratory (North Lantau) - KD1,KD16,KD17)</b>		1301d	19-Jul-13 A	21-Nov-17				
<b>KD17 - Maintenance and Upkeep of New PWRL (Portion XVII)</b>		1301d	19-Jul-13 A	21-Nov-17				
PWRL_1050	Maintenance/ Upkeep of New PWRL	1301d	19-Jul-13 A	21-Nov-17				



Activity ID	Activity Name	Remaining Dur	Early Start	Early Finish	Activity % Complete	2017				
						Jun	Jul	Aug	Sep	Oct
<b>HK/2012/08 Revised Works Programme Rev.11(DD 30 Jun 2017)</b>										
<b>Works for Section Completion</b>										
<b>Construction</b>										
<b>CWB Tunnel &amp; Slip Road Structures and Facilities</b>										
<b>CWB D - Slip Road 1 - Trough / Retaining Wall</b>										
<b>CWB D - Slip Road 1 - Trough/Retaining Wall Structure</b>										
SIIA12708	Sec II A - CWB SR1 Trough & RW: Trough Structure bay 3: Construct wall	11	15-Jun-17 A	10-Jul-17	26.67%					
SIIA12712	Sec II A - CWB SR1 Trough & RW: Trough Structure bay 2: Construct Wall & curing	37	11-Jul-17	16-Aug-17	0%					
SIIA12732	Sec II A - CWB SR1 Trough & RW: Trough Structure bay 2 & 3: waterproofing	6	17-Aug-17	22-Aug-17	0%					
SIIA12752	Sec II A - CWB SR1 Trough & RW: Trough Structure bay 2 & 3: construct box out area & backfilling	28	23-Aug-17	19-Sep-17	0%					
SIIA12772	Sec II A - CWB SR1 Trough & RW: Trough Structure bay 2 & 3: road works	10	20-Sep-17	29-Sep-17	0%					
SIIA12800	Sec II A - CWB SR1 Trough & RW: Trough Structure bay 1b: Construct wall	31	09-Aug-17	08-Sep-17	0%					
SIIA13702	Sec II A - CWB SR1 Trough & RW: Trough Structure bay 1a: Construct wall & curing	20	09-Sep-17	28-Sep-17	0%					
SIIA13722	Sec II A - CWB SR1 Trough & RW: Trough Structure bay 1a & 1b: waterproofing	8	29-Sep-17	06-Oct-17	0%					
SIIA13800	Sec II A - CWB SR1 Trough & RW: Retaining Walls RW3 & RW4 (bay 1 base slab & wall)	23	11-Jul-17	02-Aug-17	0%					
SIIA13860	Sec II A - CWB SR1 Trough & RW: Retaining Walls RW3 & RW4 (bay 2 base slab & wall)	23	03-Aug-17	25-Aug-17	0%					
<b>Section III A - Road A2, A4 &amp; A5</b>										
<b>Roadwork &amp; Utilities - Section 1 (L1806 - L1801)</b>										
SIIA10280	Sec III A - roadwork and utilities section 1 carriageway - TTA Stage 4A -1: road & drainage works	8	10-Apr-17 A	10-Jul-17	84.62%					
SIIA10282	Sec III A - roadwork and utilities section 1 carriageway - TTA Stage 4A -2: road & drainage works	21	11-Jul-17	03-Aug-17	0%					
SIIA10284	Sec III A - roadwork and utilities section 1 carriageway - TTA Stage 4A -3: road & drainage works	25	04-Aug-17	01-Sep-17	0%					
<b>Roadwork &amp; Utilities - Section 2 (L1810 - L1806)</b>										
SIIA12470	Sec III A - roadwork and utilities section 2 carriageway - Relocate site access & trim down D-wall	16	15-Jul-17*	02-Aug-17	0%					
SIIA12490	Sec III A - roadwork and utilities section 2 carriageway - Drainage works (L1810 - L1806, L2202 - L2202A)	61	03-Aug-17	13-Oct-17	0%					
<b>Roadwork &amp; Utilities - Section 3 (L1808 - L1102)</b>										
SIIA12705	Sec III A - roadwork and utilities section 3 carriageway - Trimming down d-wall	14	03-Aug-17	18-Aug-17	0%					
SIIA12710	Sec III A - roadwork and utilities section 3 carriageway - Drainage works (L1301 - L1102)	21	19-Aug-17	12-Sep-17	0%					
SIIA12750	Sec III A - roadwork and utilities section 3 carriageway - gully pipe (L1808A - L1102)	14	13-Sep-17	28-Sep-17	0%					
SIIA12762	Sec III A - roadwork and utilities section 3 carriageway - watermain	11	29-Sep-17	12-Oct-17	0%					
<b>Roadwork &amp; Utilities - Section 4 (L1406 - L1401)</b>										
SIIA12930	Sec III A - Remove pipe pile and concrete paving	8	10-Jun-17 A	10-Jul-17	82.98%					
SIIA12935	Sec III A - roadwork and utilities section 4 carriageway - Drainage works (L1406-L1401)	45	11-Jul-17	31-Aug-17	0%					
SIIA12950	Sec III A - roadwork and utilities section 4 carriageway - gully pipe (L1406 -L1401)	31	01-Sep-17	07-Oct-17	0%					
<b>Roadwork &amp; Utilities - Section 5 (L1411 - L1406)</b>										
SIIA13150	Sec III A - roadwork and utilities section 5 carriageway - Drainage works (L1411 - L1406)	20	01-Jun-17 A	24-Jul-17	54.55%					

Data Date: 30-Jun-17

- ◆ Current Milestone
- Actual Work
- Critical Remaining Work
- Remaining Work
- Remaining Level of Effort

**3-Months Rolling Programme for Non-CR III (July - September 2017)**  
(Ref. to Revised Works Programme Rev.11)

Date	Revision	Checked	Approved
10-Jul-17	11		



Activity ID	Activity Name	Remaining Dur	Early Start	Early Finish	Activity % Complete	2017				
						Jun	Jul	Aug	Sep	Oct
SIIIA13210	Sec III A - roadwork and utilities section 5 carriageway - gully pipe (L1411 - L1406)	25	25-Jul-17	22-Aug-17	0%					
SIIIA13230	Sec III A - roadwork and utilities section 5 carriageway - road formation: Crossroad duct(HEC), road kerb & formation	29	23-Aug-17	25-Sep-17	0%					
SIIIA13250	Sec III A - roadwork and utilities section 5 carriageway - black top	7	26-Sep-17	04-Oct-17	0%					
<b>Roadwork &amp; Utilities - Section 6 (L1102 - L1411)</b>										
SIIIA13370	Sec III A - roadwork and utilities section 6 carriageway - Drainage works (Culvert L - L1411)	28	05-Jun-17 A	02-Aug-17	42.86%					
SIIIA13372	Sec III A - roadwork and utilities section 6 carriageway - Backfilling of water channel adjacent culvert K bay 16	14	18-Aug-17	02-Sep-17	0%					
SIIIA13373	Sec III A - roadwork and utilities section 6 carriageway - Backfilling of water channel from culvert K bay 16 to 20B	20	24-Aug-17	15-Sep-17	0%					
SIIIA13374	Sec III A - roadwork and utilities section 6 carriageway - Drainage works (L1101-L1102)	22	16-Sep-17	12-Oct-17	0%					
SIIIA13430	Sec III A - roadwork and utilities section 6 carriageway - gully pipe (Culvert L - L1411)	30	03-Aug-17	06-Sep-17	0%					
SIIIA13444	Sec III A - roadwork and utilities section 6 carriageway - watermain	7	07-Sep-17	14-Sep-17	0%					
SIIIA13445	Sec III A - roadwork and utilities section 6 carriageway - utilities: HEC, HGC, PCCW	14	15-Sep-17	30-Sep-17	0%					
<b>Section V - Remaining At-Grade Road; Remove 2nd Stage ITA</b>										
<b>Roadwork &amp; Utilities</b>										
<b>Section 1 (L1504 - L1900)</b>										
SV12420	Sec V - Roadwork & Utilities Section 1 Carriageway - Drainage Works (L1905-L1906, L1504-L1503)	22	16-May-17 A	26-Jul-17	74.12%					
SV12450	Sec V - Roadwork & Utilities Section 1 Carriageway - Gully pipe (L1903 - L1906, L1501-L1504)	64	27-Jul-17	10-Oct-17	0%					
<b>Section 2 (L1510 - L1504)</b>										
SV12600	Sec V - Roadwork & Utilities Section 2 Carriageway - Drainage Works (L1501-L1507, L1406B-L1406A, L1611-L1609)	41	01-Jun-17 A	17-Aug-17	50%					
SV12602	Sec V - Roadwork & Utilities Section 2 Carriageway : Backfilling	7	18-Aug-17	25-Aug-17	0%					
SV12603	Sec V - Roadwork & Utilities Section 2 Carriageway - Gully pipe (L1501 - L1507 & L1611 - L1609)	30	26-Aug-17	29-Sep-17	0%					
<b>Section 3 (Culvert L - L1504)</b>										
SIV12762	Sec V - Roadwork & Utilities Section 3 Carriageway - Gully pipe (Culvert L - L1504)	11	08-Jun-17 A	13-Jul-17	63.33%					
SIV12765	Sec V - Roadwork & Utilities Section 3 Carriageway - Demolish D wall	25	16-Aug-17*	13-Sep-17	0%					
SIV12766	Sec V - Roadwork & Utilities Section 3 Carriageway - Drainage Works (Culvert L - L1611)	26	14-Sep-17	14-Oct-17	0%					
<b>Section VI D - Area 8B &amp; 10</b>										
<b>WDII Box 1 Construction</b>										
<b>WDII Box 1 ELS</b>										
WD-C4120	Sec VIC - Joint Survey of excavated level	0	18-Oct-16 A	30-Jun-17	100%					
<b>WDII Box 1 Remaining Structure</b>										
SVID-6130	Sec VID - Remaining of Box I : Trimming bored pile A4 & B3 and casting	7	25-Jun-17 A	06-Jul-17	30%					
SVID-6140	Sec VID - Remaining of Box I : Construct remaining wall & roof slab	25	07-Jul-17	31-Jul-17	0%					
SVID-6220	Sec VID - Remaining of Box I : waterproofing for roof slab	5	01-Aug-17	05-Aug-17	0%					
SVID-6340	Sec VID - Box I South: Remove ELS and trimming pipe pile	5	12-Jun-17 A	04-Jul-17	68.75%					
SVID-6360	Sec VID - Box I South: Remove SIC coarse screen hood	16	05-Jul-17	20-Jul-17	0%					
SVID-6380	Sec VID - Box I South: Install pile cap & box beam	15	21-Jul-17	04-Aug-17	0%					
SVID-6620	Sec VID - Backfilling stage 1: backfill in Box I	22	05-Aug-17	26-Aug-17	0%					
SVID-6680	Sec VID - Backfilling stage 4: backfill in dry dock	30	18-Aug-17	16-Sep-17	0%					
SVID10100	Achievement of Section VID of the Works	0		26-Aug-17	0%					
<b>Section IV - Slip Road 3</b>										



Activity ID	Activity Name	Remaining Dur	Early Start	Early Finish	Activity % Complete	2017				
						Jun	Jul	Aug	Sep	Oct
<b>Roadwork &amp; Utilities</b>										
<b>Section 1 (L16608 - L1601)</b>										
SIV11740	Sec IV - Re-Possion of the Area	0	24-Aug-17*		0%					
SIV11760	Sec IV - Roadwork & Utilities at SR3 Section 1 Carriageway - Drainage Works (L1607-L1601, L2004-L2005)	39	24-Aug-17	09-Oct-17	0%					
<b>Section 2 (L2301 - L2103)</b>										
SIV11940	Sec IV - Roadwork & Utilities at SR3 Section 2 Carriageway - Drainage Works (L2301-L2103)	21	16-Aug-17*	08-Sep-17	0%					
SIV11941	Sec IV - Roadwork & Utilities at SR3 Section 2 Carriageway - Drainage Works (L608-L1609)	30	09-Sep-17	14-Oct-17	0%					
<b>Section 3 (M/H1.6 - L2301)</b>										
SIV12100	Sec IV - Roadwork & Utilities at SR3 Section 3 Carriageway - Drainage Works (M/H1.7 - L2301)	31	09-Sep-17	16-Oct-17	0%					
SIV12102	Sec IV - Roadwork & Utilities at SR3 Section 3 Carriageway - M1.7-M1.6: Demolish seawall	20	16-Aug-17*	07-Sep-17	0%					
SIV12103	Sec IV - Roadwork & Utilities at SR3 Section 3 Carriageway - M1.7-M1.6: ELS	10	08-Sep-17	19-Sep-17	0%					
SIV12104	Sec IV - Roadwork & Utilities at SR3 Section 3 Carriageway - M1.7-M1.6: Construct manhole & pipes	36	20-Sep-17	02-Nov-17	0%					
SIV12138	Sec IV - Roadwork & Utilities at SR3 Section 3 Carriageway - Utilities: HEC to MVB Plant room	38	20-Jul-17*	01-Sep-17	0%					
SIV12170	Sec IV - Roadwork & Utilities at SR3 Section 3 footpath - Utilities: TCSS & HEC to MVB plant room	43	02-Sep-17	23-Oct-17	0%					
<b>Section VII - Remainder Works</b>										
<b>Retaining Wall RW5 Construction</b>										
SVII10660	Sec VII - Retaining Wall RW5 (bay 1) - construct base slab and wall	20	19-Sep-17	12-Oct-17	0%					
SVII10800	Sec VII - Retaining wall RW5 (bay 3) - construct base slab and wall	20	19-Sep-17	12-Oct-17	0%					
<b>Promenade Seawall Parapet Construction</b>										
SVII13100	Sec VII - Zone A1, A2 & B: Remove temporary seawall block	21	15-Aug-17*	07-Sep-17	0%					
SVII13120	Sec VII - Zone A1, A2 & B: Construct seawall block mass concrete coping	45	08-Sep-17	01-Nov-17	0%					
SVII13200	Sec VII - Zone D: Remove temporary seawall block	21	19-Sep-17	13-Oct-17	0%					
<b>Promenade Footpath and EVA Construction</b>										
<b>Section 5</b>										
SVII13270	Sec VII - section 5 footpath - drainage works (L2203 -L2204) & U channel	49	29-Aug-17	25-Oct-17	0%					
<b>Section X - Protection &amp; Preservation of Trees</b>										
<b>Soft Landscaping Works</b>										
SX10020	Sec X - Protection & Preservation of Trees	322	31-Jan-13 A	17-May-18	80.27%					